

We think first before our customers do  
We act first before our customers do

Amongst numerous words and phrases describing PanStar, “for the first time ever in Korea” would be most often found. For the first time ever in Korea, PanStar launched the cruise Business combining the ferry and cruise services offering various entertainment and activities on board. For the first time ever in Korea, PanStar obtained a license of customs clearance in Japan in order to provide high-quality logistics service to our customers. Also, For the first time ever in Korea, PanStar started its business of transporting cargoes in Japan through the Japan Railways(JR). Although paving a new path is a difficult and challenging task, we will not hesitate for there are corresponding opportunities and achievements available. A Company where people with more expectations in tomorrow than today are gathered together to work with passionate hearts,

this is PanStar.

PANSTAR GROUP

PANSTAR OVERVIEW

- 03 — Group Business
- 04 — CEO Message
- 05 — History & Awards

PANSTAR SERVICE

- 07 — PanStar Express Cargo
  - > P.K.L.B
  - > T.S.P.S
  - > P.U.E
- 12 — PanStar International Express
- 13 — Container Shipping Service
- 14 — PanStarInvestment
- 15 — PanStar International Express
  - PanStar Cruise
    - > Osaka Cruise Ferry
    - > Busan One Night Cruise
    - > Panstar Tsushimalink

SUBSIDIARY COMPANY

- 23 — PanStarEnterprise
- 31 — PanStarTree
- 33 — PanStarBNGD
- 35 — PanStar I&C
- 37 — SanStarLine
- 39 — PanStar Network

# GROUP BUSINESS



## PANSTAR

Overseas cargo transportation  
International freight forwarding  
Shipping agency

## PANSTAR LINE.COM

Overseas passenger transportation  
Cruise services (Cruise passenger transportation)  
International cargo forwarding (Cruise passenger transportation)  
International cargo forwarding

## PANSTAR ENTERPRISE

Automobile maintenance equipment  
Cruise services Trading  
Stevedoring services  
International cargo/freight forwarding  
International express transportation

## PANSTAR I&C

New construction and renovation of buildings  
Interior outfitting of ships  
Building maintenance and management  
Specialized construction of POSART systems



## SANSTARLINE

Overseas cargo transportation  
International freight forwarding  
Shipping agency  
Customs clearance services  
Travel businesses  
/Bus transportation services

## PANSTAR BNGD

General/Bonded Warehousing  
International cargo forwarding  
Weight verification

## PSBX Robotics

Development and sales of commercial cleaning robots and smart equipment

## PSBX Realty

SmartBX business operations covering smart building cleaning, facility management-based FM/HM, and human resource management.

## PanStar Investment

Financial and investment (ship) services, including ship design and eco-friendly ship engineering.

## SP TRADING

Trading  
Distribution services  
Container leasing services



# CEO MESSAGE



## PanStar – Creating and Sharing a Culture Filled with Smiles of Customers

PanStar considers the process as equally important as the result.  
Is PanStar growing together with its customers and partners?  
Is PanStar’s profit leading to a national interest?  
Is PanStar contributing to the development of local economy?

PanStar will be reinforcing such desirable corporate culture that considers both objective and process to be important.  
PanStar is a corporation in which joyful and cheerful memories are instantly engraved in the hearts and minds of cargo owners and traveling customers.

PanStar CEO Hyun Gyum, Kim



# HISTORY & AWARDS

## 1990

1990. 07 Established PANSTAR ENTERPRISE CO., LTD.
1994. 12 Established PANSTAR TREE CO., LTD., an inland freight traansportation affiliate
1999. 01 Established PANSTAR LINE.COM CO., LTD., an Overseas cargo transportation affiliate
- 08 Established SANSTARLINE CO., LTD., a local entity in Japan
2000. 02 Introduced “PANSTAR DREAM” vessel
- 04 Obtained a license international transportation between Busan and Osaka : PANSTAR LINE.COM CO., LTD.
- 04 Commenced PANSTAR DREAM service for a route to Osaka
2004. 12 Commenced weekend one-night cruises from Busan
2006. 11 Obtained a license for customs clearance for Osaka : SANSTARLINE CO., LTD.
2007. 03 Obtained a travel business license : SANSTARLINE CO., LTD.
- 04 Introduced “PANSTAR SUNNY” vessel
- 04 Commenced the Busan-Osaka daily service
- 05 Commenced the P.U.E (PanStar Ultra Express) service
2008. 04 Obtained a multimodal ferry business license : PANSTAR LINE.COM CO., LTD.
- 04 Commenced international and domestic cruises for the first time in Korea
- 04 Introduced “PANSTAR HONEY” vessel
- 06 Obtained a local rail freight transportation permit in Japan : SANSTARLINE CO., LTD.
- 12 Obtained a local Tokyo customs clearance license in Japan : SANSTARLINE CO., LTD.
2009. 01 Commenced the Busan-Kobe route service
- 02 Launched the “Air Cruise” product in partnership with Air Busan : PANSTAR LINE.COM CO., LTD.

1999. 05 SME Entrepreneur Award : Representative Director
2002. 02 Trade Promotion Award : Representative Director
2005. 04 Presidential Commendation : Representative Director
2006. 12 “Person of the Year”in the Ferry Industry : Representative Director
2007. 12 Management Innovative SME
2008. 07 International Tourism Academic Conference Tourism Company Management Grand Prize Award : Representative Director
- 11 Korea Logistics Grand Prize Minister of Land, Transport and Maritime Affairs Award : PANSTAR LINE.COM CO., LTD.
2009. 11 Trade Day Minister of Knowledge Economy Award : Representative Director
- 11 20 million dollars Export Tower Award : PANSTAR LINE.COM CO., LTD.

## 2010

2010. 01 Commenced the P.K.L.B (PanaStar Korea Land Bridge) service
- 07 Commenced the Osaka and Tsuruga routes services by SANSTAR DREAM
- 10 The number of Busan-Osaka cruise passengers exceeded 1 million
2011. 02 Registered for the port transportation business(general loading and unloading) : PANSTAR TREE CO., LTD.
- 06 Trial cruise service in Hallyeohaesang National Marine Park
- 12 Established PanStar Busan Newport Global Distripark
2012. 06 Commenced the Yeosu Expo one-night cruise service
- 08 Introduced “STARLINK ONE” vessel
- 11 Registered for the Ministry of Land, Transport and Maritime Affairs ocean-going regular freight transportation business : PANSTAR CO., LTD.
- 11 Commenced the Tsuruga and Kanazawa routes services by STARLINK ONE
2013. 01 Commenced the Osaka route service by STARLINK ONE
- 08 The number of Busan port one night cruise passengers exceeded 100,000
- 09 Commenced the Tokyo route express cargo ferry service for the first time by Korean and Japanese marine companies
- 12 Opened PanStar Busan Newport Global Distripark
2014. 04 Commenced the Osaka route service by STARLINK
- 08 Obtained the Korean Register of Shipping “SMC(Safety Management Certificate), DOC (Document of Compliance)” : PANSTAR TREE CO., LTD.

1999. 05 Model Taxpayer Commendation : Representative Director

## 2015

2015. 01 Commenced the Masan I-Port(Gapo Newport) Port operation & Stevedoring services : PANSTAR TREE CO., LTD.
- 02 Subscribead to the marine insurance of 1 billion dollars for PANSTAR DREAM
- 03 Commenced the Masan I-Port route service by STARLINK ONE
- 03 Obtained the first-class freight transportation service license : SANSTARLINE CO., LTD.
- 10 Commenced the Yokohama route service by STARLINK HOPE
- 12 Acquired Heshbon Co., Ltd. and changed the business name to PANSTAR ENTERPRISE CO., LTD.
- 12 Obtained the second-class international freight transportation service license : SANSTARLINE CO., LTD.
2016. 01 Obtained the freight forwarder AEO(Authorized Economic Operator) certification : PANSTAR CO., LTD.
- 04 Commenced the Korea Strait one-night cruise service
- 04 Obtained the shipper AEO certification : PANSTAR LINE.COM CO., LTD.
- 07 Obtained the bus business license : SANSTARLINE CO., LTD.
- 10 Commenced the Shidao China route service by STARLINK ONE
- 10 Commenced the T.S.P.S(Trilateral Sea-highway PanStar Service)
2017. 01 Entered into the PSA Agreement for Costa Crociere, Italy NeoRomantica Cruise
- 02 Developed an IoT-based smart vessel application system
- 07 Opened a new information system HELIOS
- 09 Introduced “PANSTAR GENIE” vessel
- 11 Commenced the Busan-Nagoya route service by PANSTAR GENIE
- 12 Introduced “PANSTAR GENIE NO.2” vessel
2018. 04 Commenced the Busan-Shimonoseki route service by PANSTAR GENIE NO.2
- 04 Obtained a local Shinomoseki customs clearance license in Japan : SANSTARLINE CO., LTD.
2019. 04 Appointed the exclusive model for PanStar Cruise : PANSTAR LINE.COM CO., LTD.
- 08 The 20th Anniversary of SANSTARLINE CO., LTD.
- 10 Opened the Hydrogen Eco-friendly Energy Research Center : PANSTAR ENTERPRISE CO., LTD.

2017. 05 22ndOcean Day, Stone Tower Order of Industrial Service Merit : Representative Director
- 12 Costa Award : PANSTAR ENTERPRISE CO., LTD.
2018. 03 Commissioner of Customs Commendation : PANSTAR CO., LTD.
- 11 Osaka Tourism Bureau Letter of Appreciation : SANSTARLINE CO., LTD.
- 12 Cruise of the Year Special Award : SANSTARLINE CO., LTD.
2019. 05 State Emergency Control Merit Prime Minister Commendation : PANSTAR LINE.COM CO., LTD.

## 2020

2020. 06 Registered as an express transport company, Commenced international marine express cargo services
- 07 The 30th Anniversary of PanStar CO., LTD.
2021. 03 Supplied a lithium iron phosphate battery system to Sumitomo, Japan
2022. 07 Signed a construction contract for the Miracle Cruise Ferry
- 08 PanStar Enterprise completed construction of its Gimpo factory
- 09 PanStar Line.com launched a new route connecting Pyeongtaek and Japan
2023. 02 PanStar Tsushima Link began service on the Busan-Tsushima route
- 06 Construction began on PanStar Group’s Seoul headquarters, the PanStar Cruise Plaza Seoul
- 10 Groundbreaking ceremony held for the PanStar Miracle Cruise
- 11 Duty-free online shopping mall launched
- 11 PanStar Tech Solution signed an MOU with a Sumitomo Group affiliate in Japan
2024. 01 PanStar Enterprise secured a research project in the defense sector.
- 01 PanStar Investment was established.
- 01 PanStar Enterprise established PSBX Robotics, a joint venture.
- 05 Keel laying ceremony held for the PanStar Miracle Cruise.
- 07 PanStar Line.com’s regular container ship began service.
- 09 Load-out conducted for the PanStar Miracle Cruise.
- 09 PanStar Enterprise signed a contract with FuriosaAI.
- 10 Launching ceremony held for the PanStar Miracle Cruise.
2025. 01 PanStar New Port International Logistics Center obtained AEO certification for import/export safety management.
- 04 PanStar Miracle Cruise Naming Ceremony held
- 04 The PanStar Miracle Cruise’s maiden voyage is on the 13th
- 07 PanStar Cruise Plaza Seoul completed construction.

2024. 09 PanStar Group Chairman Kim Hyun-kyum received the 15th Korea Maritime Grand Prize

# PANSTAR EXPRESS CARGO

## PanStar Korea-Japan Logistics Starting from Japan’s Industrial Center City

By offering a non-stop shipping service to Osaka, which is an industrial center of Japan with the excellent accessibility to neighboring regions such as Hanshin and Keihin, PanStar minimized the shipping hours between exporters and importers. Moreover, by offering a non-stop shipping service to Tsuruga, one of major ports in Japan’s western coast, PanStar provides daily express services to the entire regions in Japan. PanStar developed an ultra-express service in which the Korea-Japan door to door lead time is only 2 days by establishing the oneday customs clearance and loading and unloading system based on its own customs clearance license and sailing between Korea and Japan in only 17 hours with PanStar’s own ferry boats.

### HOT DELIVERY SERVICE

Arrives at a place of import in the morning of the immediately next day under the shortest transportation time  
By linking marine transportations of the local inner harbor ferries with inland transportations and JR railway transport in Japan through establishment of its precise schedule and speedy customs clearance system, PanStar established express transportation service that can deliver cargoes to the entire regions of Japan

### STATE-OF-THE-ART SAFETY SHIPPING SYSTEM

By minimizing a vessel’s rolling through a vessel body stabilizer, we secured the stability of cargoes such as containers and bulk cargoes, and stable shipping is possible even in bad weather such as summer typhoon under our state-of-the-art shipping system

### ALL TYPE CARGO

PanStar’s RO/RO vessels regularly transport from FCL types such as DRY, RF and FR, etc. and LCL types for cost saving to Bulk types such as semiconductor equipment, construction machinery and press machineries, etc. for which transportation by containers is not feasible

### ROLL-ON / ROLL-OFF

As a RO/RO vessel, rapid and stable loading and unloading works are possible using the bow and stern ramps and PanStar safely transports various cargoes such as non-vibration vehicles and high-cost manufacturing equipment  
We minimize the exposure of break-bulk cargo to the elements during rainy conditions by performing loading and unloading operations for freight vehicles directly within the vessel.



### M/V PANSTAR MIRACLE

PORT	SUN	MON	TUE	WED	THU	FRI	SAT
BUSAN	Departure 16:00		Arrival 10:00 Departure 16:00		Arrival 10:00 Departure 16:00		Arrival 11:00
OSAKA		Arrival 09:00 Departure 16:00		Arrival 09:00 Departure 16:00		Arrival 09:00 Departure 17:00	

### M/V PANSTAR GENIE

PORT	SUN	MON	TUE	WED	THU	FRI	SAT
SHIDAO						Arrival 09:00 Departure 18:00	
BUSAN				Arrival 19:00	Departure 12:00		Arrival 17:00 Departure 22:00
TOKYO		Arrival 08:30 Departure 17:00					
NAGOYA			Arrival 08:00 Departure 14:00				

### M/V PANSTAR GENIE NO.2

PORT	SUN	MON	TUE	WED	THU	FRI	SAT
MASAN				Arrival 18:00			Departure 18:00
BUSAN	Arrival 08:30 Departure 13:00			Arrival 18:00			
TSURUGA		Arrival 08:30 Departure 15:00					
KANAZAWA			Arrival 08:30 Departure 12:00				



**M/V PANSTAR MIRACLE**  
Gross Ton : 22,129M/T  
L.O.A : 171.20M  
Speed : 25kn  
Cargo Capacity : 254TEU



**M/V PANSTAR GENIE**  
Gross Ton : 13,682M/T  
L.O.A : 161.15M  
Speed : 18.00kn  
Cargo Capacity : 264TEU



**M/V PANSTAR GENIE NO.2**  
Gross Ton : 13,681M/T  
L.O.A : 161.15M  
Speed : 18.00kn  
Cargo Capacity : 264TEU

# P.K.L.B

PanStar Korea Land Bridge

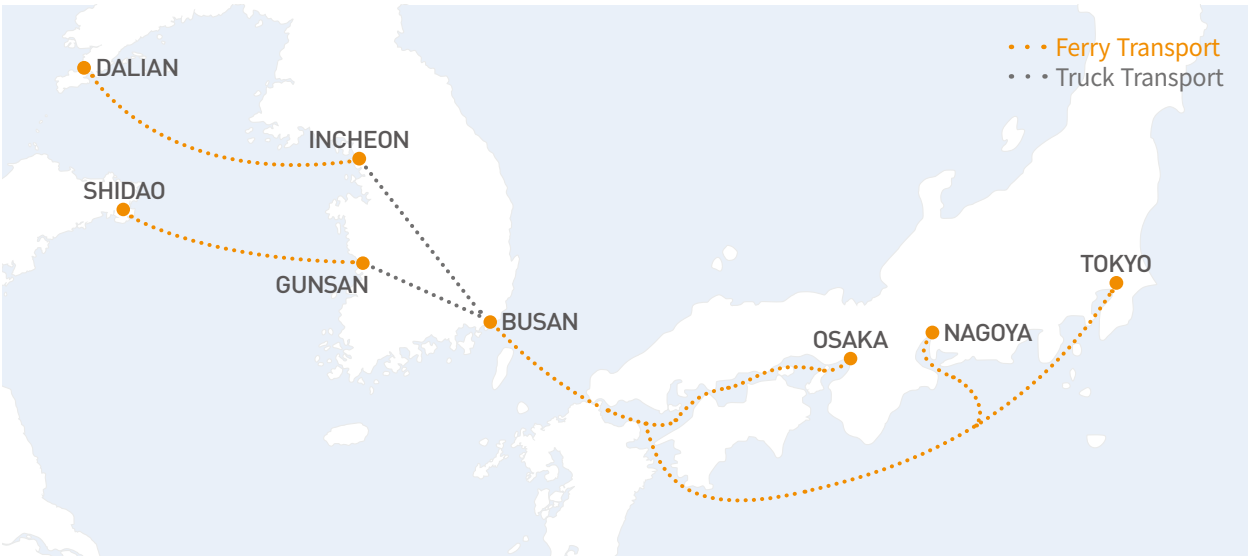
## New Logistics Route Connecting “China – Korea – Japan”

PanStar Korea Land Bridge is the service that enables arrivals from China to Japan’s Osaka, Tokyo and Tsuruga within 3 days (lead time 40 hours) by connecting the Korea-China car ferries currently operating in the entire regions of China such as Shandong and PanStar ferries operating in the Korea-Japan routes with inland bonded transportations.

We established the service route that enables saving of logistics costs for cargo owners by delivering cargoes that were previously transported from China to Japan through the air or air and sea service within the equivalent lead-time.

PORT	SUN	MON	TUE	WED	THU	FRI	SAT
SHIDAO		Departure 18:00		Departure 18:00			Departure 18:00
GUNSAN	Arrival 09:00		Arrival 09:00		Arrival 09:00		
BUSAN	Departure 16:00		Departure 16:00		Departure 16:00		
OSAKA		Arrival 09:00		Arrival 09:00		Arrival 09:00	

PORT	SUN	MON	TUE	WED	THU	FRI	SAT
DALIAN						Departure 17:00	
INCHEON							Arrival 09:30
BUSAN							Departure 22:00
TOKYO		Arrival 08:30					
NAGOYA			Arrival 08:30				



# T.S.P.S

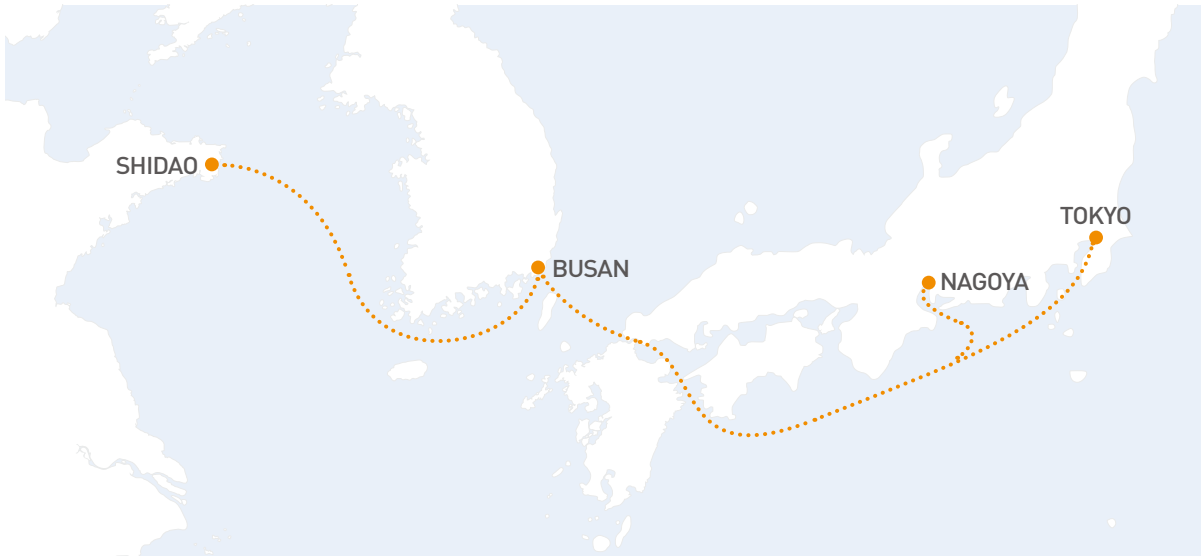
Trilateral Sea-highway PanStar Service

## “China – Korea – Japan” Direct Transport Service without T/S

The Trilateral Sea-highway PanStar Service is a marine service with freight delivery under shortest hours in the Korea-China and China-Japan routes by directly operating PanStar ferries between China Shidao Port – Busan Port – Japan Tokyo and Nagoya Ports. It is the Hot Delivery Service in which China’s products can be delivered to Japan’s major cities in 3-4 days and Japan’s products can also be delivered to Shandong and the entire regions of China in 3-4 days.



PORT	SUN	MON	TUE	WED	THU	FRI	SAT
SHIDAO						Arrival 09:00 Departure 18:00	
BUSAN				Arrival 19:00	Departure 12:00		Arrival 17:00 Departure 22:00
TOKYO		Arrival 08:30 Departure 17:00					
NAGOYA			Arrival 08:30 Departure 14:00				





# P.U.E PanStar Ultra Express

## Express Freight Service as Rapid and Economic as Air Transportation

By linking our ferries operating between Busan and Japan with Japan Railway freight system, which is renowned for its thorough and precise on-time schedule, PanStar established logistics routes that connect the entire regions of Japan. PanStar Ultra Express is a Hot Delivery Service that delivers within 2 days export and import cargoes of major cities in Japan to any inland part for which the port service is not available.

### Possession of Railway Transportation License

Only 1.3% of all logistics companies in Japan are in possession of the railway transportation license

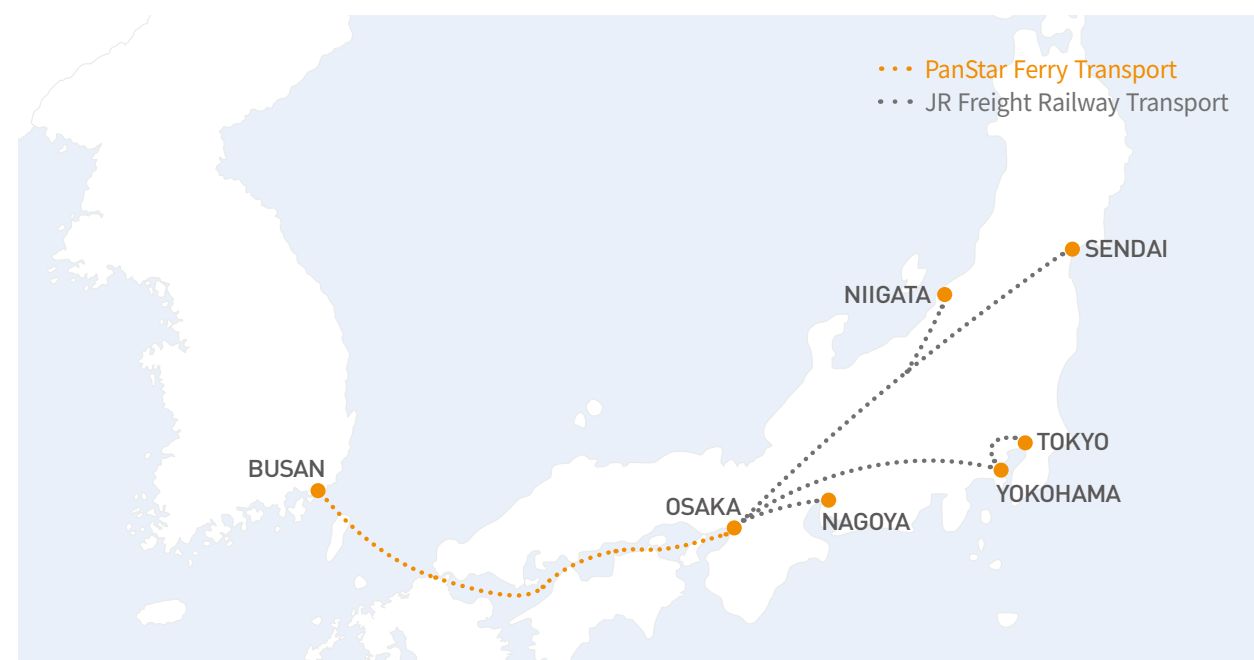
### On-Time Schedule

The length of Japanese territory is around 3,000 km from its south to north

We are capable of providing one-day cargo delivery service to any place in Japan by using railway transportation network that connect approximately 140 railway terminals throughout Japan

### Establishment of Ultra Express Transport Mode

By combining our own ferries and railway transport, we developed the ultra express transport mode (PUE) that can replace air transportation Which saves transportation costs in an innovative manner compared to aviation logistics



# P.I.E.X PanStar International Express Services

## PIEX Service provided in Korea, China and Japan which has become even faster by utilizing the one-day customs clearance and integrated logistics system

E-Commerce business among Korea, China and Japan will be expanding even faster through 'PIEX(PanStar International Express)', the new concept of PanStar's international marine express cargo services primarily based on PanStar's express cargo ferries. PanStar offers new international logistics services using PIEX, international express cargo services, which has maximized efficiency by operating all the processes required for international express transportation including local logistics, packing, clearance, bonded transportation and marine transportation, etc.

### PanStar Express Cargo Ferries

Achieves daily express delivery service throughout the mainland of Japan by offering a non-stop shipping service to major(Japanese) ports such as Osaka, Tokyo, Nagoya, Shimonoseki and Tsuruga

### SanStar Line

Obtained the customs clearance licenses in Osaka and Tokyo for the first time as a local company Offers the one-stop service through international transportation service and export and import customs clearance service

### Yongdang Express Cargo Clearance Division in Busan

Processes rapidly increasing E-Commerce express cargoes departing from Japan and China through the International Express Cargo Clearance Division of Yongdang Customs which has been established at Busan Port in 2020 in order to disperse and bring in such express cargoes to Busan Port that were previously concentrated on Incheon Port and Pyeongtaek Port PanStar is registered as No.1 express transport company at International Express Cargo Clearance Division of Yongdang Customs in Busan and offers optimized services

#### OUTSIDE (1 DAY)



Pickup  
(Inbound to client site)



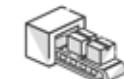
Cargo  
consolidation



Picking  
& Packing



Outbound  
& Delivery



Customs &  
Export loading



High-speed  
ferry departure

#### INSIDE (1 DAY)



High-speed  
ferry arrival



Cargo  
unloading



Inland bonded  
transport



Import customs  
clearance



Parcel  
delivery



Final delivery  
to customer



# PANSTAR CONTAINER SHIP SERVICE

## Container ship service connecting Japan’s major metropolitan areas

PanStar Container Ship Service provides service through Kobe, Tokyo, and Yokohama, cities representing the Hanshin and Keihin regions, which are major areas of Japan. We aim to make logistics easier and smoother for exporters and importers by connecting Japan’s major metropolitan areas.

AN DONG 68  
 Gross Ton : 3,988  
 L.O.A : 99.9M  
 Speed : 12.5kn  
 Cargo capacity : 230TEU

## KJHK (Korea-Japan Hanshin-Kehin Service)



BUSAN	KOBE	TOKYO	YOKOHAMA
SAT	MON	WED	WED

## KOREA-CHINA SERVICE

Beyond just linking Korea and Japan, the PanStar container service also unifies Korea, China, and Japan, offering a comprehensive trilateral connection.



### BUSAN-NINGBO-SHANGHAI SERVICE

BUSAN	NINGBO	SHANGHAI
WED	FRI	SAT

### BUSAN-QINGDAO SERVICE

BUSAN	QINGDAO
SUN	TUE

# PANSTAR INVESTMENT

## PanStar Investment: Your Strategic Investment Partner

PanStar Investment is PanStar Group’s dedicated investment arm, driving the group’s future growth by discovering and strategically nurturing new business ventures.

We are continuously expanding our business scope by increasing investments in promising new projects, leveraging the synergy and connection with our existing businesses such as shipping and port logistics.





# PANSTAR CRUISE

## Korea's First 5-Star Luxury Cruise Ferry – Built with Korean Technology

Introducing the Miracle Cruise, the first luxury cruise ferry built and operated under the Korean flag. It offers a completely new cruise experience, unlike anything previously available in Korea.

From an outdoor swimming pool with an ocean-view infinity pool to 5-star hotel-level luxury cabins and unparalleled service, every moment of your journey, from start to finish, will be extraordinary.



PANSTAR MIRACLE			
Year of Building	: 2025년	Speed	: 25knots
Nationality	: Republic of Korea	PAX Capacity	: 355persons
LOA	: 171.20M	GT	: INT'L 22,129T
Beam	: 25M	CARGO	: 254TEU

## Your Fastest Gateway to Tsushima from Busan

Our vessel takes just 1 hour and 10 minutes, and with its advanced stabilizer system, you'll enjoy a comfortable and safe journey with minimal rocking and seasickness.

Embark on a trip to Tsushima, a natural island gem in Japan, where crystal-clear blue waters, lush forests, and tranquil fishing villages come together in perfect harmony.



PANSTAR TSUSHIMALINK			
Year of Building	: 2001년	Speed	: 40knots
Nationality	: Republic of Korea	PAX Capacity	: 425persons
LOA	: 52M	GT	: INT'L 684T
Beam	: 12M		



Economy



Premium

# PANSTAR MIRACLE FACILITIES INTRODUCTION

## CABINS



Owner's Room



Presidential Suite



Royal Suite



Balcony Suite



Oceanview



Inside

## FACILITIES



Mugunghwa & Cherry Blossom (VIP Lounges)



VIP Lounge



Yume



[Wellness] Therapy



[Wellness] Sauna



[Wellness] Fitness



Bada (Specialty Restaurant)



Mascarade



Pocha



Kids Club



Game Bar



Symposium(Seminar Room)



Hyeonhaetan (Infinity Pool)



DUTTY FREE&CVS



Solarium



# OSAKA CRUISE FERRY

## Special Trip from the Moment of Boarding, Special Way to Japan

You can enjoy comfortable and elegant cruise trips with our luxurious cruise cabins and facilities, enjoyable events, and distinguished services. You can relish beautiful sceneries of Setonaikai Strait and great food as well as various benefits available only for Cruise Zone customers.

### Sailing schedules

\* Timetables are subject to change without prior notice due to local conditions or unforeseen circumstances.

Route	Departure	Arrival	Baggage Check-in	Check-in	Last Call
Busan > Osaka	Busan Port Sun, Tue, Thu / 16:00	Next Day 09:00	14:00 ~ 14:30	14:30 ~ 15:00	Until 15:30
Osaka > Busan	Osaka Port Mon, Wed, Fri / 16:00	Next Day 10:00	15:00 ~ 16:00	16:00 ~ 16:20	Until 16:30

### Relishing the Best Marine Scenery in Japan

The magnificent sceneries of Setonaikai, Japan's marine national park, Seto Bridge, and Akashi Strait Bridge, the longest suspension bridge in the world, offer stirring inspirations

### The Only Cruise to Center of Japan

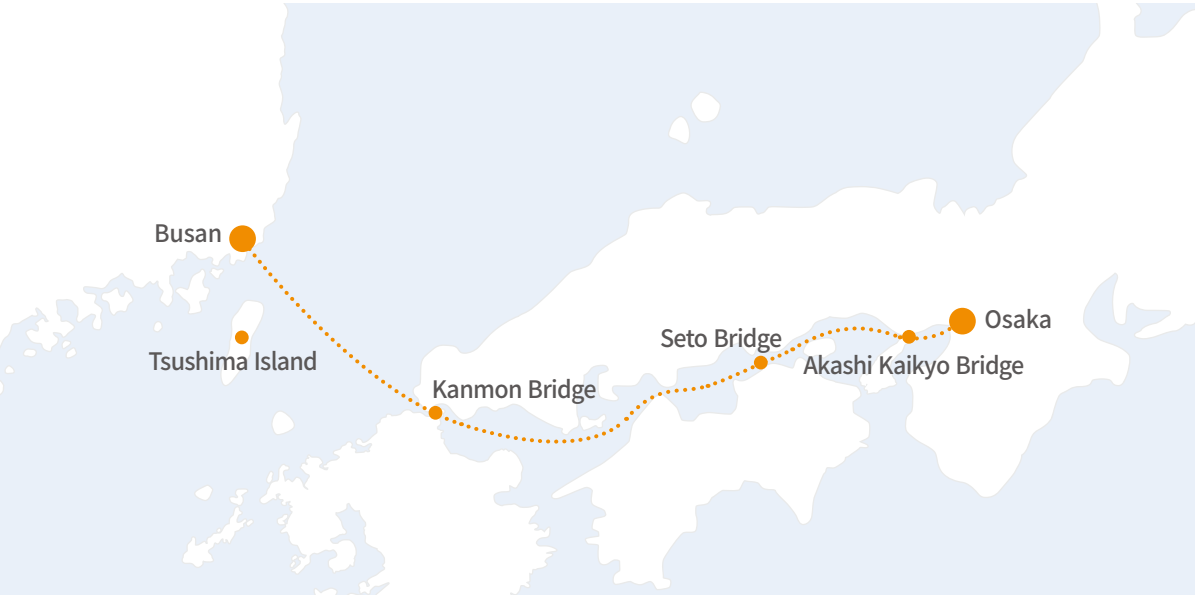
Convenient access between Korea's Busan and Japan's Osaka and Kansai and very superb accessibility between the terminal and the city center

### The First and Best Cruise in Korea

Offers delight through various performance shows and events  
With convenient facilities and services, you can enjoy relaxation and romance of cruising that are never available in airplane trips



### Sailing route



Kanmon Bridge		Seto Bridge		Akashi Kaikyo Bridge	
Busan > Osaka	21:30	Busan > Osaka	04:40	Busan > Osaka	07:50
Osaka > Busan	04:30	Osaka > Busan	21:20	Osaka > Busan	18:20

### Tonight Cruise

This is a 2-night, 3-day travel package that includes a round-trip ticket, an onboard buffet meal, dedicated bus transportation, local tour expenses, and priority disembarkation upon arrival at your destination.



### 3-Night, 4-Day Free-Style Cruise

Enjoy a customizable 3-night, 4-day cruise! You can choose from a chartered cruise, perfect for corporate events or incentive tours where you plan your own tailored program, or select from various itineraries carefully curated by PanStar, including exciting port-of-call excursions.





# BUSAN ONE NIGHT CRUISE

## Island of Fantasy Floating in Busan's Coastal Waters Every Weekend

You can enjoy the beautiful ocean of Busan, one of the best coastal cities in Korea, as well as fantastic fireworks embroidering the night sky on board the cruise ship. You can experience comfortable rooms, convenient facilities, performance shows on splendid stages and various participating events. Equipped with dinner and breakfast cruise buffet meals, welcome drinks, and stages and sound equipment for various meetings and events, the cruise is a perfect fit for events such as home coming days, general assemblies, outings, and picnics.

### Sailing schedules

\* Timetables are subject to change without prior notice due to local conditions or unforeseen circumstances.

Route	Departure	Ticket Issuance	Departure Process	Check-in	On-Board Buffet	Fireworks	Arrival
Busan One night Cruise	Standard	Saturday around 17:00	-	15:30 ~ 16:00	18:00 ~ 20:00	20:50	Sunday around 09:00
	Winter	Saturday around 16:30	-	15:00 ~ 15:30	18:00 ~ 20:00	20:50	Sunday around 09:00
Korea Strait One Night Cruise (The third saturday of every month)	Saturday around 16:30	14:00 ~ 15:00	15:30 ~ 16:00	15:50 ~ 16:10	18:30 ~ 20:30	21:20	Sunday around 09:00



### Busan Port One-Night Cruise

You can enjoy Busan's coast and fantastic night scenery such as Jo Island, Taejongdae, Oryuk Island and Gwangan Bridge among others as well as hundreds of onboard fireworks embroidering the night sky as well as various events and performances



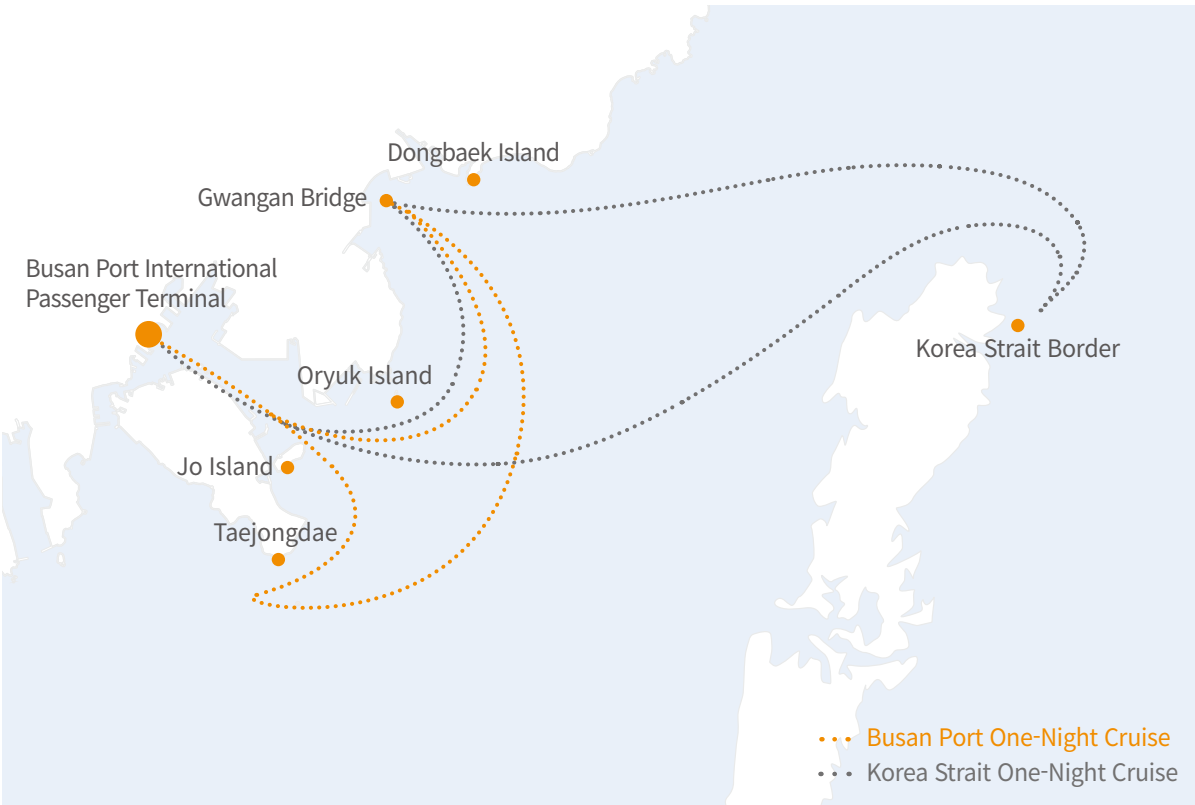
### Korea Strait One-Night Cruise

As an international cruise that you can meet every third Saturday of every month, the cruise provides close views of Korea Strait border and you can enjoy duty free shopping and even more diverse onboard events



### Charter Cruise (Schedule TBD)

As a product that rents (leases) a cruise, it can be used in cases of state and local organizations' events, corporate events (research and client invitation, etc.), and personal events (marriage, party, and alumni meeting, etc.)





# PANSTAR TSUSHIMALINK

## An Elegant and Unique Way to Enjoy a Day Trip

Experience Tsushima, Japan’s closest island to Korea!  
This border island is brimming with pristine nature and an eternal, mysterious allure.

With the Tsushima Link, designed to minimize rocking and seasickness, you can comfortably explore the diverse charms of Tsushima, whether it’s trekking, fishing or cycling.



Sailing route



### Convenient Onboard Services

Duty-Free Storage Service: Purchase duty-free items onboard when you depart and conveniently pick them up on your return journey

### Premium Seating

Enjoy a more comfortable trip in our premium seats, featuring wider, more relaxing recliner seats than economy class

### Onboard Currency Exchange

We offer the first-ever currency exchange service available directly on a high-speed ferry



### Infant Care Room

Located on the 2nd floor of the vessel, this private space is dedicated for nursing and baby care



### Travel Gear Storage

Situated on the 1st floor, this area allows you to store various activity items like bicycles and fishing gear



### Duty-Free Shop

Find a selection of liquor, whisky, cigarettes, cosmetics, general merchandise, and Japanese snacks. You can also pre-order items through our online duty-free shop.





# PANSTAR ENTERPRISE

## Heshbon Business Department

### Leading the Vehicle Maintenance Equipment Market, Global Maintenance Brand HESHBON

PanStar Enterprise developed the X-TYPE lift for the first time in Korea, and passed the safety test in the state-certified testing agency for the first time in the industry, obtaining the Q-mark. HESHBON, the vehicle general maintenance equipment brand, is leading the market by developing high-tech equipment such as tyre wheel balance, tyre changers, and wheel alignment among others as well as various models of lifts based on its verified technological prowess.

It has been making full commitments to the development of new products after establishing a corporate R&D center in 2001 and it was listed on KOSDAQ in 2002.

HESHBON has been interacting with global populations by establishing its sales network in around 45 countries including the US, Europe and Japanese markets, the advanced countries in maintenance equipment. By obtaining the CE-mark, the Europe’s safety certification mark, HESHBON’s maintenance equipment have received global recognitions for their quality and safety.

#### Operation of Corporate R&D Center

Recognized as a corporate R&D center by the Korea Industrial Technology Association for the first and only time in the Korean maintenance industry

#### Application for Patent and Utility Model Rights

Possesses the nationwide After Sales Service network in Korea and provide a 2-year free warranty

#### Nationwide After Sales Service Network

The company that uniquely possesses the nationwide After Sales Service network in the Korean maintenance industry, providing one year guarantee

#### Nationwide Network of Agencies and Service Centers

Nationwide Agencies and Service Centers Operates 23 sole distributors/agencies and 17 service centers nationwide



## Cruise Business Department

### The Easiest Way to Embark on an Authentic Cruise Vacation Directly from Korea

Now, you can comfortably enjoy an authentic international cruise experience right from Korea! PanStar Cruises, dedicated to making cruise travel more accessible, has partnered with leading international cruise lines to offer cruises departing directly from and returning to Korea.

This is the pinnacle of comfortable and enjoyable overseas travel – no more enduring long hours in cramped airline seats, or the hassle of constantly packing and unpacking as you move between cities by bus. The moment you step aboard a magnificent cruise ship, you’ll immediately be immersed in an atmosphere of excitement and the joy of being abroad.

PanStar Enterprise, honored as Costa Cruises’ “Best Operation Agency” in 2017, is actively meeting the diverse cruise demands of domestic and international corporations, travel agencies, and individual travelers. We achieve this through both coastal cruises on our own vessels and chartered cruise operations in collaboration with international cruise lines. Furthermore, PanStar Enterprise is establishing itself as a leading pioneer in Korea’s burgeoning cruise industry, a key new growth sector for the future.





# PANSTAR ENTERPRISE

Future Business Department  
Aggregation Division

Designs, develops, converges and promotes high technologies and distributes them to the global market

PanStar Enterprise focuses on planning and promoting the leading technology business on a global level. PanStar plans to grow into a high-tech specialized trading company by establishing a value chain that combines technical planning, business development, technological convergence, production management, marketing and logistics management in association with the core competencies of the PanStar Group and overseeing the entire processes of the above.

## Energy Storage System

Conducts business supplying lithium iron phosphate (LiFePO<sub>4</sub>) batteries and control systems(BMS) to companies conducting communication, energy and infrastructure services at the global market by promoting an industrial energy storage system from the technical planning stage

Develops and globally distributes FESS(Factory Energy Storage System), RESS(Renewable Farm), TESS (Telecommunication), HESS(Home) and the related solutions based thereon such as Virtual Power Plant(VPP) and Automated Guided Vehicles(AGV), etc



## Software Distribution

Distribution of 'EXPRESSCLUSTER X,' a high-availability (HA) cluster software, in the Korean market through a partnership agreement with NEC Japan



Future Business Department  
Software & Platform Division

Operates business based on authenticated encryption technology and establishes networks and platforms using such technology

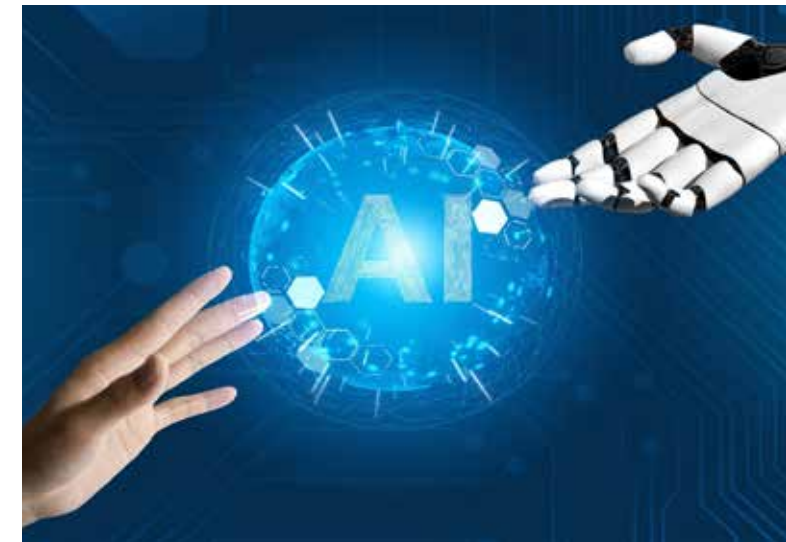
Based on our patented authentication and encryption technology, we develop next-generation network designs and AI application technologies, deploying them globally in various product and service formats.

## Device Authentication and Data Security Technology: ‘SoTIS’

An authentication solution for various IT communication devices, as well as ultralight devices like sensors and IoT devices  
Enables seamless real-time encrypted transmission and storage of transaction information, user data, files, and even large video data through simultaneous encryption at the data generation stage

## AI Infrastructure Development Business

Developing and deploying components related to advanced data center construction for AI technology utilization in industrial control and security, mobility, and defense sectors





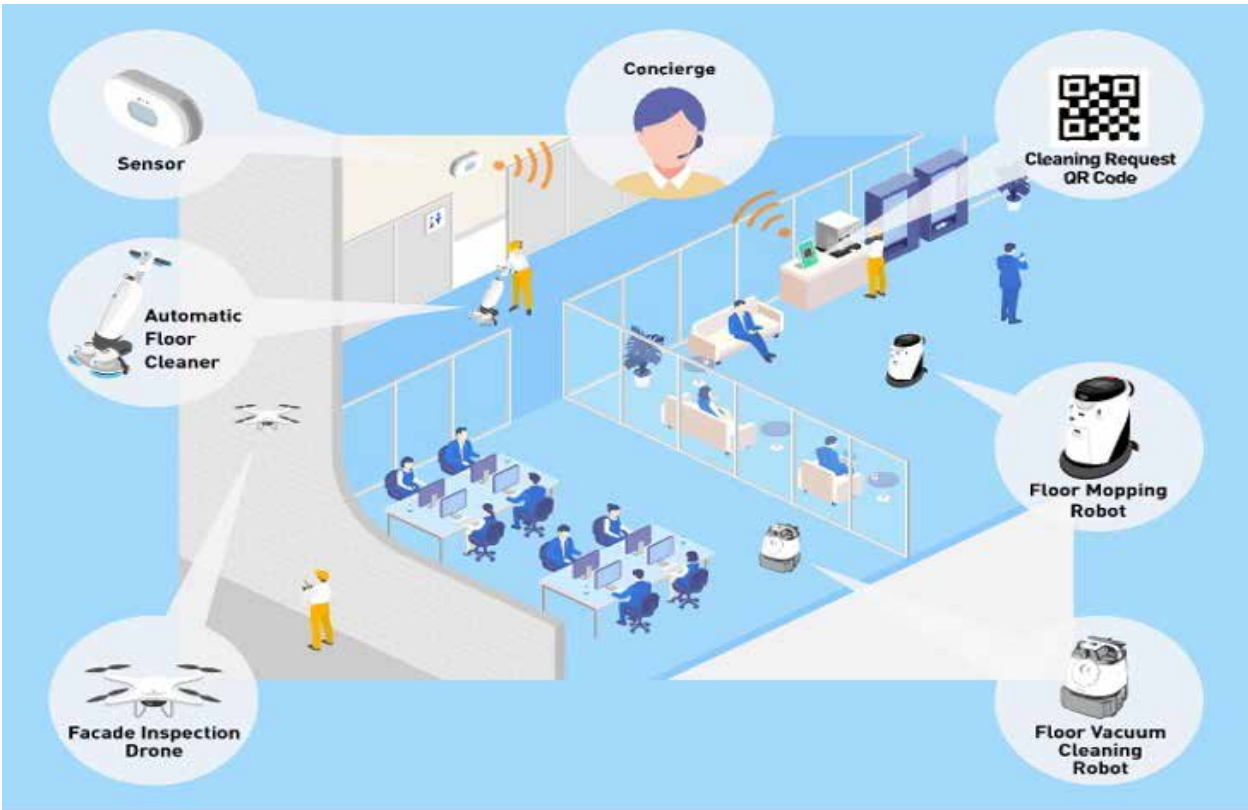
# PANSTAR ENTERPRISE

## PSBX Smart FM (SBX + Robotics) Business Division

In collaboration with SoftBank Robotics, we've established a joint venture to transform traditional analog FM services into digitalized FM businesses utilizing a hybrid system where robots and humans collaborate.

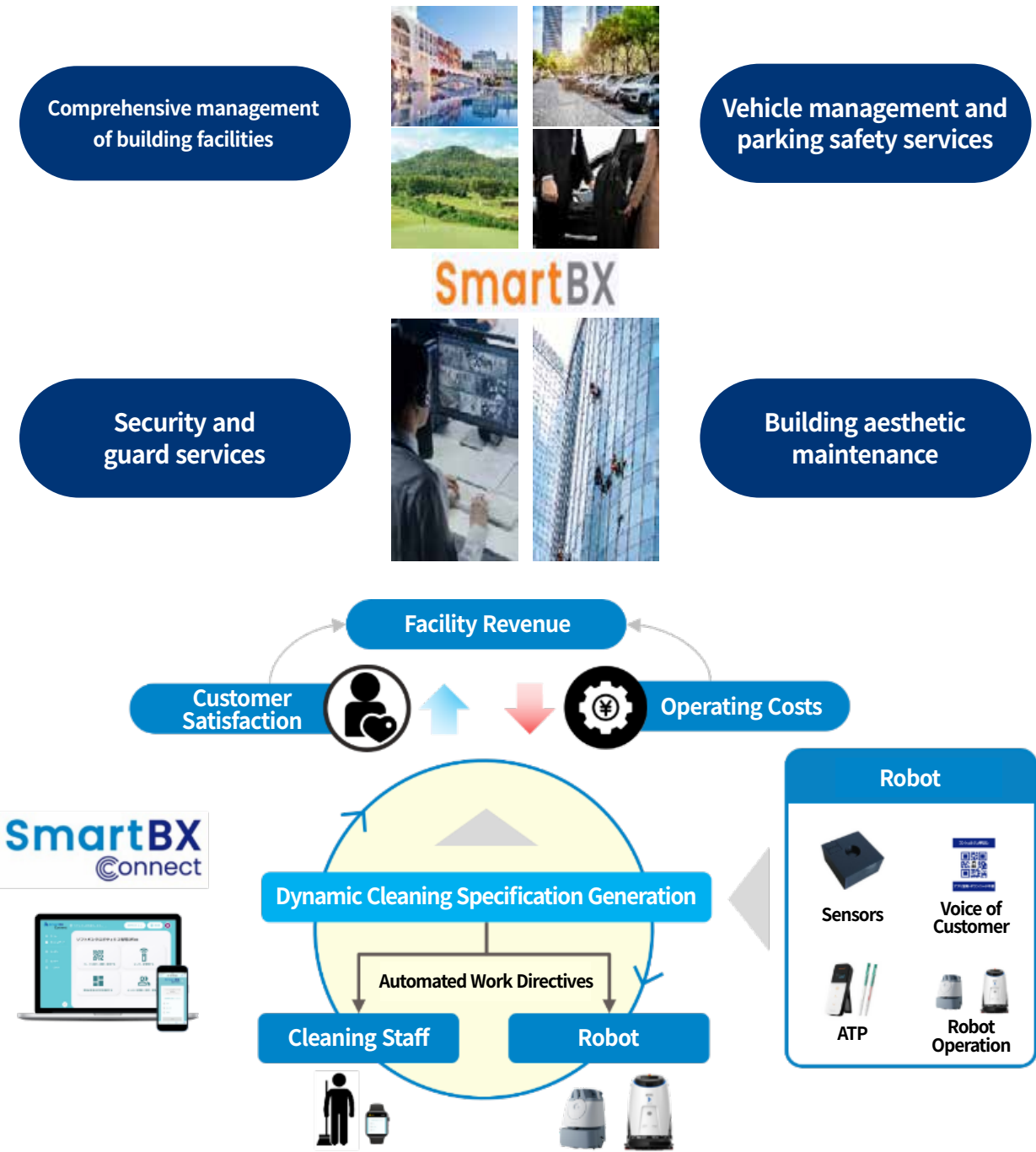
### SBX (Smart Building DX) Solution Business

- Provides services that link robots, sensors, analyzers, and facilities through our independently developed SmartBX platform
- Establishes robotics operation solutions specifically for hospitals and medical institutions
- Secures a diverse lineup of robotic vacuum cleaners, enabling optimal proposals tailored to each site



### SBX (Smart Building DX) Facility Management Business

- Building a nationwide network starting with Seoul and Busan, growing into a top-tier Smart FM company
- Expanding service areas from large complex buildings, hospitals, knowledge industry centers, hotels, and public facilities to include large apartment complexes and office buildings, based on our existing track record
- Establishing a comprehensive service that cares for both the interior and exterior of buildings



# PANSTAR ENTERPRISE

## Shipbuilding & Marine Division

PanStar Enterprise’s Shipbuilding & Marine Division is your total service provider and global engineering firm, offering everything from comprehensive new build design to eco-friendly vessel modifications!

We provide all necessary integrated designs for shipbuilding, from hull design to production engineering. In addition, we offer various Retrofit Engineering solutions to meet environmental regulations, including exhaust gas cleaning systems (EGCS), ballast water management (BWM) systems, and air lubrication systems (ALS). Our specialized engineers and technical sales team leverage extensive installation experience to support shipping companies and shipyards both domestically and internationally. Furthermore, we are actively responding to the global shipping industry’s demand for energy conservation and greenhouse gas emission reduction. We are diversifying our business into areas such as Energy Saving Devices (ESD) and Carbon Capture Systems (CCS).

### Competitive Pricing

We provide reasonable quotations because we manage every project entirely in-house. This includes everything from 3D scanning, basic and detailed design, and drawing approvals, to material procurement and construction supervision

### Extensive Ship Retrofit Experience

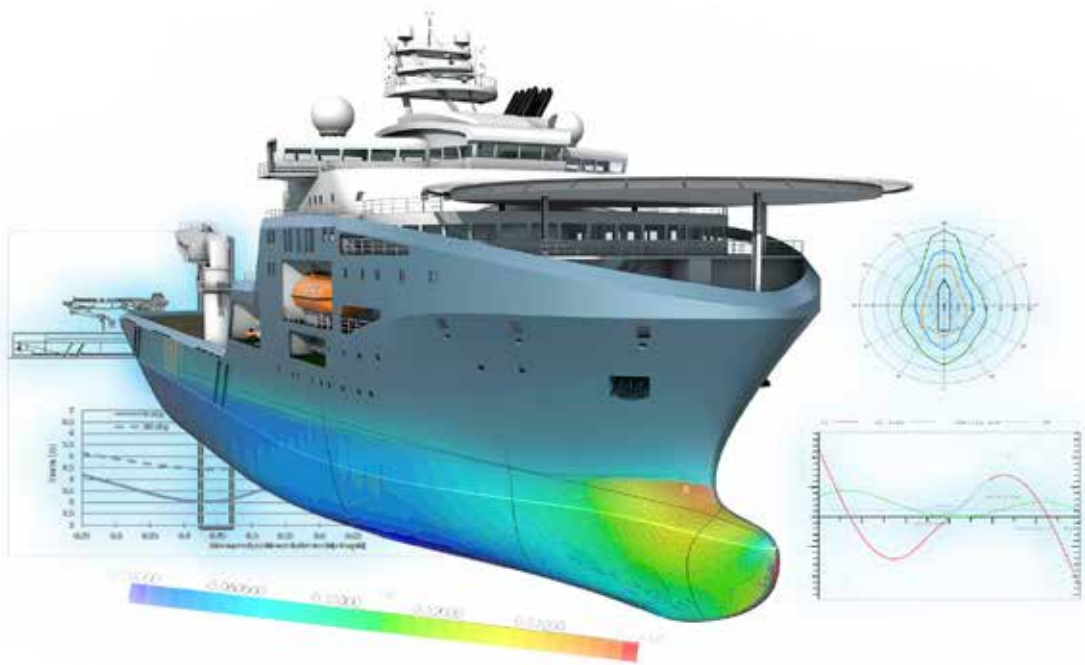
With a rich track record of over 200 BWMS installations and around 50 EGCS installations, our vast experience in ship modifications helps clients significantly reduce costs through minimized construction times and expenses

### Comprehensive New Ship Design

We offer all-inclusive design services for new vessels. This covers everything from sales design and hull lines design, all the way through to basic and detailed design, and even production design based on 3D modeling.

### EEXI & CII Consulting Services

To help you meet IMO’s existing ship energy efficiency regulations (EEXI) and carbon intensity regulations (CII), we offer optimized consulting services. These are based on an objective analysis of actual vessel environments and operational data, ensuring the best solutions for your specific vessel.



As your reliable engineering partner, we continuously earn client trust through our extensive experience and proven technical expertise!

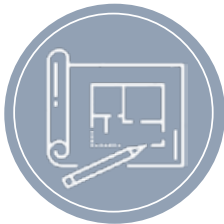
Engineering Capability		
Basic Design	- General Arrangement	- T/S & Damage Stability, Etc
Hull Design	- Key Plan	- Hull Construction, Etc
Hull Piping	- Piping Diagram, Etc	- Valve & Fitting list for Hull part
Hull Outfitting	- Anchor & Mooring Arr't	- Hull Outfitting Arr't, Etc
Machinery	- Machinery Arr't of E/R & P/R	- P&ID, Etc
Elec. Design	- Power analysis Calculation	- Electrical Design, Etc
Accom. Design	- Piping & HVAC	- Joinery Part
Prod. Design	- Hull, Pipping, Outfitting & Electric, ETC	



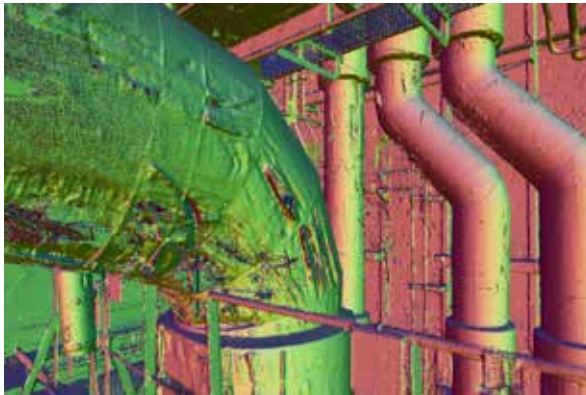
Skilled Engineers with extensive experience



Proven Engineering capability via lots of Retrofit Projects



From Contract Design To Production Design





# PANSTAR TREE

## A Company Specializing in Ship & Crew Management, Ship Operation

PanStar Tree is a management company specializing in passenger ships aiming to view situations from the perspective of the owners, which offers differentiated management services for the owners in respect of ship, crew and safety such as cost saving and ship management consulting, etc.

We effectively performs ship management services through the ship management system and financial management system that have adopted the company's knowhow on the management of domestic passenger ships and express ferries, and also provides monitoring services which enable the owners to check information on the ship's operations and management conditions online as well as regular management reports.

In particular, we offers the finest solutions for the management and operation of passenger ships based on its years of experiences including passenger ship management, crew training and onboard service operation, etc.

### Shipbuilding Supervision & Management

Consults with shipyards to build ships in an energy-saving and environment friendly manner while remaining in compliance with various international conventions the classification rules and supervises/manages the shipbuilding processes by suggesting the optimal shipbuilding plans

### Crew Management

Offers smooth handling service via our systematic crew management service encompassing from recruitment of crew to their resignation

Controls precise ship operation schedules and creates efficient work environment for crew and optimizes the crew management costs by handling data such as working hours, wages and holidays, etc

### Safety Management

Continuously maintains and improves the safety management system installed for safe operation of ships and environment protection so that it is constantly in compliance with requirements of ISM CODE and the applicable laws

### Public Affairs Management

Enhances transparency by conducting a competitive tender for suppliers of machinery parts and ships' articles and optimal inventory management by avoiding duplicate purchases of unnecessary items

Minimizes bunker oil consumption by analyzing ship operations and the optimal ordering of bunker oil based on market analysis and maintenance of adequate quantity of bunker





# PANSTAR BNGD

## Establishment of Optimal System and Achievement of Best Utility and Economic Feasibility

PanStar Busan Newport Global Distripark, as a resident in Busan Port’s newport free trade zone, has price competitive edges in logistics costs pursuant to tax benefits offered to cargo owners, shippers, and resident companies. BNGD is located in the optimal location for higher-value added tasks(assembly, disassembly, processing, repair, inspection, and repackaging, etc.) and transshipment cargo trading, and BNGD is equipped with the real-time supervisory and reporting system by allocating responsible personnel for integrated control. Furthermore, BNGD secures mobility and safety by allocating exclusive and special loading and unloading equipment for warehouses with different functions. BNGD is focused in developing higher-value added logistics services through establishment of overseas bases and partnerships with global logistics companies.

### RO/RO Vessel Connected Service

Achieves prompt loading and unloading and non-stop logistics service through RO/RO vessels by establishing a network with Japan’s total logistics company. Saves transportation costs since the logistics center and the newport terminal are located nearby to each otherthe optimal shipbuilding plans

### Creation of New Cargoes with High Added Values

Offers the logistics services that take advantages of the Busan Newport’s low storage fees and cargo handling fees among others

### Establishment of Advanced Base for Trading

Enhances products’ global competitiveness through saving of logistics costs such as reduction of transportation distance, assembly, labeling, packaging, and storage among others

### Safety Management

Continuously maintains and improves the safety management system installed for safe operation of ships and environment protection so that it is constantly in compliance with requirements of ISM CODE and the applicable laws

### Public Affairs Management

Enhances transparency by conducting a competitive tender for suppliers of machinery parts and ships’ articles and optimal inventory management by avoiding duplicate purchases of unnecessary items. Minimizes bunker oil consumption by analyzing ship operations and the optimal ordering of bunker oil based on market analysis and maintenance of adequate quantity of bunker

### Additional Services



Packing



Assembling



Sorting



Labelling



Weighing



Disease Control



Total Area 40,106㎡ | 1st Floor 16,525㎡ | 2st Floor 4,958㎡ | Storage Capacity Warehouse Cargo 23,000R/T Container Yard 3,150TEU





# PANSTAR I&C

## PanStar Infra Construction: Innovative and Expert General Construction Services

PanStar Infra Construction is a comprehensive construction company that leverages innovative technology and specialized expertise to provide diverse construction services. We handle the maintenance and management of PanStar Group's own structures, including buildings and specialized facilities like ships. As a proud partner of POSCO SteeLeon, we specialize in the interior and exterior construction of buildings using their premium PosART products. We're continually expanding our business scope as a general construction firm capable of building new structures, renovating existing ones, and remodeling public facilities in both Korea and Japan.

### Building New Construction & Renovation

We possess comprehensive capabilities across all aspects of architecture, from architectural planning and interior design to 3D imaging, structural calculations, and drawings. We manage the entire building construction process, from initial quotation proposals to design and construction.

### Ship Interior Construction

With over 20 years of experience in ship interior construction, we specialize in fitting out cabins, lobbies, performance venues, and various amenity spaces.

### Building Maintenance & Management

We inspect structural safety and evacuation-related aspects to ensure buildings remain safe, enhance convenience, and propose rational equipment operation and efficient usage plans to reduce maintenance costs.

### PosART Specialist Construction

As a certified specialist contractor for POSCO SteeLeon's PosART, we have a proven track record across various sectors, including public facilities, ships, and other buildings. We offer a simple and innovative approach to installing eco-friendly, permanent interior and exterior finishes.





# SANSTARLINE

A comprehensive logistics company in Japan, providing intra-Asia cargo transport and import/export customs clearance services, primarily focusing on Korea, China, and Japan.

PanStar Infra Construction is a comprehensive construction company that leverages innovative technology and specialized expertise to provide diverse construction services. We handle the maintenance and management of PanStar Group’s own structures, including buildings and specialized facilities like ships. As a proud partner of POSCO Steeleon, we specialize in the interior and exterior construction of buildings using their premium PosART products. We’re continually expanding our business scope as a general construction firm capable of building new structures, renovating existing ones, and remodeling public facilities in both Korea and Japan.

**Possession of Customs Clearance License and Railway Transportation License**

Possesses Japan’s customs clearance license(Osaka, Tokyo, and Shimonoseki) and JR railway transportation license

**Possession of Information Processing System**

Established the cargo direct customs clearance system and logistics system in Japan and possesses the information processing system

**DOOR TO DOOR SERVICE**

Offers the door-to-door service in Japan nationwide by using the international transportation services

**List of Obtained Permits**

- 1999.12.14  
First-Class Transportation Business
- 2006.11.08  
Osaka Customs Clearance Business
- 2007.03.15  
First-Class Travel Business
- 2008.06.27  
Second-Class Cargo Transportation Business
- 2008.12.09  
Tokyo Customs Clearance Business
- 2015.03.30  
First-Class Cargo Transportation Business
- 2015.12.18  
Foreigner International Second-Class Cargo Transportation Business
- 2016.07.29  
General Chartered Passenger Vehicle Transportation Business
- 2018.04.17  
Shimonoseki Customs Clearance Business
- 2021.01.29  
Type 1 Cargo Vehicle Transport Business





# PANSTAR NETWORK

## PANSTAR CO., LTD.

Overseas cargo transportation, International freight forwarding, Shipping agency

[Seoul HQ]  
PanStar Cruise Plaza Seoul, 18 Sejong-daero 16-gil,  
Jung-gu, Seoul, Korea  
TEL. 02-779-4011      FAX. 02-775-7533

## PANSTAR ENTERPRISE CO., LTD.

Automobile maintenance equipment, Cruise services, Trading, Stevedoring services, International cargo/ freight forwarding, International express transportation, including ship design and eco-friendly ship engineering

[Busan HQ]  
PanStar Cruise Plaza, 30, Haegwan-ro, Jung-gu, Busan  
TEL. 1577 - 3520      FAX. 051 - 256 - 2930  
[Incheon Branch]  
108, 249beon-gil, Robot Land-ro, Seo-gu, Incheon  
TEL. 1577 - 3520      FAX. 032 - 585 - 3535

[Incheon Branch]  
108, 249beon-gil, Robot Land-ro, Seo-gu, Incheon  
TEL. 1577 - 3520      FAX. 032 - 585 - 3535

[Seoul HQ]  
PanStar Cruise Plaza Seoul, 18 Sejong-daero 16-gil,  
Jung-gu, Seoul, Korea  
TEL. 02 - 774 - 6811      FAX. 02 - 776 - 6811

[PIEX International Express Cargo Office]  
4FL., ChildFund Bldg., 20, Mugyo-ro, Jung-gu, Seoul  
TEL. 02 - 777 - 5482      FAX. 02 - 772 - 5567

[Shipbuilding & Marine Division]  
PanStar Cruise Plaza, 30, Haegwan-ro, Jung-gu, Busan  
TEL. 051-240-8234      FAX. 051 - 240 - 8246

## PANSTAR LINE.COM CO., LTD.

Overseas passenger transportation,  
Cruise services(Cruise passenger transportation),  
International cargo forwarding

[Busan HQ]  
PanStar Cruise Plaza, 30, Haegwan-ro, Jung-gu, Busan Cargo  
TEL. 051 - 465 - 4500      FAX. 051 - 469 - 8208

[Seoul HQ]  
PanStar Cruise Plaza Seoul, 18 Sejong-daero 16-gil,  
Jung-gu, Seoul, Korea  
Cargo TEL. 02 - 756 - 4500      FAX. 02 - 772 - 7522  
Passenger TEL. 02 - 756 - 7711      FAX. 02 - 775 - 6850

[Busan Port International Passenger Terminal Office]  
3FL., Busan Port International Passenger Terminal, 206,  
Chungjang-daero, Dong-gu, Busan  
Passenger TEL. 1577 - 9666      FAX. 051 - 469 - 6179

[Pyeongtaek Branch]  
11F, 73, Pyeongtaekhangman-gil, Poseung-eup,  
Pyeongtaek-si, Gyeonggi-do, Republic of Korea  
Cargo TEL. 031 - 684 - 9063      FAX. 031 - 681 - 9066

## PANSTAR TREE CO., LTD.

Ship Management, Construction

[Busan HQ]  
PanStar Cruise Plaza, 30, Haegwan-ro, Jung-gu, Busan  
TEL. 051 - 469 - 8801      FAX. 051 - 469 - 8215

[Changwon Branch]  
3FL., 201, Dream Bay-daero, Masan Hapo-gu,  
Changwon, Gyeongnam  
TEL. 055 - 240 - 4823      FAX. 055 - 240 - 4821

## PANSTAR BNGD CO., LTD.

General/Bonded Warehousing, International cargo forwarding, Weight verification

56, Sinhang 7-ro, Changwon, Gyeongnam (Nammun-dong)  
TEL. 055 - 981 - 3241      FAX. 055 - 551 - 1771

## PANSTAR I&C

Interior Construction Contracting

PanStar Cruise Plaza Seoul, 18 Sejong-daero 16-gil,  
Jung-gu, Seoul, Korea  
Passenger TEL. 02 - 318 - 6811      FAX. 02 - 318 - 6812

## SANSTARLINE CO., LTD.

Overseas cargo transportation, International freight forwarding, Shipping agency, Customs clearance services, Travel businesses /Bus transportation services

[Osaka HQ]  
7FL., Osaka Kokusai Bldg. 2-3-13, Azuchi-machi, Chuo-ku,  
Osaka Cargo  
TEL. 81 - 6 - 6267 - 9778      FAX. 81 - 6 - 6267 - 9766  
Customs  
TEL. 81 - 6 - 6271 - 3233      FAX. 81 - 6 - 6271 - 8832

[Osaka International Ferry Terminal]  
2FL., International Ferry Terminal, 20-52, 1-chome  
Nankokita, Suminoe-ku, Osaka  
Passenger TEL. 81 - 6 - 6614 - 2516  
FAX. 81 - 6 - 6614 - 2518  
Truck/Bus TEL. 81 - 6 - 6614 - 2581  
FAX. 81 - 6 - 6614 - 2700

[PIEX Express Cargo Warehouse]  
5-23, 4-Chome, Nanko Higashi, Suminoe-ku, Osaka-shi  
TEL. 81 - 6 - 6569 - 2230      FAX. 81 - 6 - 6569 - 2238

[Tokyo Branch]  
7FL., Daichi Ginza Bldg., 12-28, 7-chome Ginza, Juo-ku,  
Tokyo Cargo  
TEL. 81 - 3 - 3544 - 5123      FAX. 81 - 3 - 3544 - 5126  
Customs  
TEL. 81 - 3 - 3544 - 5123      FAX. 81 - 3 - 3544 - 5126

[Hokuriku Office]  
3FL., Kanazawa Port Cruise Terminal, RI-65,  
Muryojimachi, Kanazawa-Shi Ishikawa  
TEL. 81 - 76 - 254 - 6884      FAX. 81 - 76 - 254 - 6885

[Nagoya Office]  
6FL., Mugenmarunouchi Bldg., 23-21, 3-chome,  
Marunouchi, Naka-ku, Nagoya  
TEL. 81 - 52 - 950 - 6630      FAX. 81 - 52 - 950 - 6631

[Tsushima Hitakatsu International Passenger Terminal]  
2F, 958-11 Hitakatsu, Kamitsushima-cho, Tsushima-shi,  
Nagasaki, Japan  
TEL. 81 - 920 - 88 - 6060

## SP TRADING CO., LTD.

Trading, Distribution services, Container leasing services

2F, International Ferry Terminal, 20-52, 1-chome  
Nankokita, Suminoe-ku, Osaka  
TEL. 81 - 6 - 6569 - 2520      FAX. 81 - 6 - 6614 - 7039

