



 **PanStar (주)팬스타**
www.panstar.co.kr

 **Panstarline.com**

Making the World Smaller and Closer
PANSTARtree

 **PanStar BNGD**
팬스타 신항국제물류센터

 **PanStar Enterprise**
팬스타 엔터프라이즈 KOSDAQ 코스닥상장법인

 **PanStar I&C**
팬스타인프라건설

 **PanStar INVESTMENT**

PSRobotics



SANSTAR
SANSTAR LINE CO., LTD.

SPTRADING
株式会社 エスピーワン



GROUP BROCHURE
PANSTAR



ENGLISH



We think first before our customers do
 We act ahead before our customers do

Among the many words used to describe PanStar, "the first in Korea" is the one heard most often. For the first time ever in Korea, PanStar launched the cruise business combining the ferry and cruise services offering various entertainment and activities on board. For the first time ever in Korea, PanStar obtained a license of customs clearance in Japan in order to provide high-quality logistics service to our customers. In addition, PanStar introduced cargo transport services utilizing Japan Railways (JR) for the first time in Korea. Although paving a new path is a difficult and challenging task, we will not hesitate there are corresponding opportunities and achievements available. A place where people who believe in a better tomorrow come together with passion. This is PanStar.

PanStar Group

PANSTAR OVERVIEW

- 03 — Group Business
- 04 — CEO Message
- 05 — History & Awards

PANSTAR SERVICE

- PanStarLine.com
- 07 — PanStar Express Cargo
 - > P.K.L.B
 - > T.S.P.S
 - > P.U.E
- 12 — Container Shipping Service
- 13 — PanStar Cruise
 - > Seto Inland Sea Cruise
 - > Busan One-Night Cruise
 - > PanStar Tsushima Link
 - > PanStar Grace

SUBSIDIARY COMPANY

- 23 — PanStarTree
- 25 — PanStarBNGD
- 27 — PanStarEnterprise
 - > Shipbuilding & Marine Business Division
 - > HESHBON Business Division
 - > Charter Cruise Business Division
 - > Future Business Division
 - > International Express Business Division
- 33 — PanStar I&C
- 35 — PS Robotics
- 36 — PanStarInvestment
- 37 — SanStarLine
- 41 — PanStar Network

GROUP BUSINESS



PanStar Co., Ltd.

International Ocean Freight
Transport
International freight forwarding
Shipping agency



PanStarline.com Co., Ltd.

International Ocean Freight
Transport
International Passenger Transport
& Freight Forwarding



PanStarTree Co., Ltd.

Vessel and Crew Management
Construction and Engineering



PanStarBNGD Co., Ltd.

General & Bonded
Warehousing International
cargo forwarding Weight
verification



SanStarLine Co., Ltd.

Ocean Freight Transportation ·
International Freight Forwarding
Shipping Agency · Customs Clearance
Travel Services · Bus Operations
Machinery & Equipment Trading



PanStar Enterprise Co., Ltd.

Automotive Maintenance Equipment
Integrated Logistics & Cruise Services
Eco-Friendly Ship Engineering
Future Business Development



PanStar I&C Co., Ltd.

Building Construction &
Renovation
Ship Interior Construction
Specialized POSART Installation



PanStarInvestment Co., Ltd.

Financial & Ship Investment
Services



PS Robotics Co., Ltd.

Industrial Robotics Development & Control
Physical AI-based Intelligent Solutions Business
AX, Smart FM-based Facility Management, Security
& Outsourced Operations Services



SP Trading Co., Ltd.

Trading
Distribution services Container
leasing services

CEO MESSAGE

PanStar – Creating and Sharing a Culture Filled with Smiles of Customers

PanStar values the process as much as the result.

Is PanStar growing together with its customers and partners?

Is PanStar contributing to the development of local economy?

PanStar will be reinforcing such desirable corporate culture that considers both objective and process to be important.

PanStar creates memorable experiences from the very first encounter—for both cargo owners and travelers.

PanStar CEO Hyun Gyum, Kim



HISTORY

1990

- 1990. 07 Established PanStar Enterprise Co., Ltd.
- 1995. 01 Established PanStarTree Co., Ltd., an international ocean freight transportation affiliate
- 1999. 01 Established PanStarline.com Co., Ltd. an International Ocean Freight Transport affiliate
- 08 Established SanStarLine Co., Ltd., a local entity in Japan
- 2002. 02 Introduced “PANSTAR DREAM” vessel
- 04 Obtained a license for international transportation between Busan and Osaka : PanStarline.com Co., Ltd.
- 04 Commenced PANSTAR DREAM service for a route to Osaka
- 2004. 12 Commenced weekend one-night cruises from Busan
- 2006. 11 Obtained a license for customs clearance for Osaka : SanStarLine Co., Ltd.
- 2007. 03 Obtained a travel business license : SanStarLine Co., Ltd.
- 04 Introduced “PANSTAR SUNNY” vessel
- 04 Commenced the Busan-Osaka daily service
- 05 Commenced the P.U.E (PanStar Ultra Express) service
- 2008. 04 Obtained a multimodal ferry business license : PanStarline.com Co., Ltd.
- 04 Commenced international and domestic cruises for the first time in Korea
- 04 Introduced “PANSTAR HONEY” vessel
- 06 Obtained a local rail freight transportation permit in Japan : SanStarLine Co., Ltd.
- 12 Obtained a local Tokyo customs clearance license in Japan : SanStarLine Co., Ltd.
- 2009. 01 Commenced the Busan-Kobe route service
- 02 Launched the “Air Cruise” product in partnership with Air Busan : PanStarline.com Co., Ltd.

2010

- 2010. 01 Commenced the P.K.L.B (PanStar Korea Land Bridge) service
- 07 Commenced the Osaka and Tsuruga routes services by SANSTAR DREAM
- 10 The number of Busan-Osaka cruise passengers exceeded 1 million
- 2011. 02 Registered for the port transportation business(general loading and unloading) : PanStarTree Co., Ltd.
- 06 Trial cruise service in Hallyeohaesang National Marine Park
- 12 Established PanStar Busan Newport Global Distripark
- 2012. 06 Commenced the Yeosu Expo one-night cruise service
- 08 Introduced “STARLINK ONE” vessel
- 11 Registered for the Ministry of Land, Transport and Maritime Affairs ocean-going regular freight transportation business : PanStar Co., Ltd.
- 11 Commenced the Tsuruga and Kanazawa routes services by STARLINK ONE
- 2013. 01 Commenced the Osaka route service by STARLINK ONE
- 08 The number of Busan One-Night Cruise passengers exceeded 100,000
- 09 Commenced the Tokyo route express cargo ferry service for the first time by Korean and Japanese marine companies
- 12 Opened PanStar Busan Newport Global Distripark
- 2014. 04 Commenced the Osaka route service by STARLINK HOPE
- 08 Obtained the Korean Register of Shipping “SMC(Safety Management Certificate), DOC(Document of Compliance)” : PanStarTree Co., Ltd.

AWARDS

1990

- 1999. 05 SME Entrepreneur Award : Representative Director
- 2002. 02 Trade Promotion Award : Representative Director
- 2005. 04 Presidential Commendation : Representative Director
- 2006. 12 “Person of the Year” in the Ferry Industry : Representative Director
- 2007. 12 Management Innovative SME
- 2008. 07 International Tourism Academic Conference Tourism Company Management Grand Prize Award : Representative Director
- 11 Korea Logistics Grand Prize Minister of Land, Transport and Maritime Affairs Award : PanStarline.com Co., Ltd.
- 2009. 11 Trade Day Minister of Knowledge Economy Award : Representative Director
- 11 Awarded the USD 20 Million Export Tower : PanStarline.com Co., Ltd.

2010

- 1999. 05 Model Taxpayer Commendation : Representative Director

2015

- 2015. 01 Commenced the Masan I-Port(Gapo Newport) Port operation & Stevedoring services : PanStarTree Co., Ltd.
- 02 Secured marine insurance coverage of USD 1 billion for PANSTAR DREAM
- 03 Commenced the Masan I-Port route service by STARLINK ONE
- 03 Obtained the first-class freight transportation service license : SanStarLine Co., Ltd.
- 10 Commenced the Yokohama route service by STARLINK HOPE
- 12 Acquired Heshbon Co., Ltd. and changed the business name to PanStar Enterprise Co., Ltd.
- 12 Obtained International Class 2 Freight Forwarding License SanStarLine Co., Ltd.
- 2016. 01 Obtained the freight forwarder AEO(Authorized Economic Operator) certification :PanStar Co., Ltd.
- 04 Commenced the Korea Strait one-night cruise service
- 04 Obtained the shipper AEO certification : PanStarline.com Co., Ltd.
- 07 Obtained the bus business license : SanStarLine Co., Ltd.
- 10 Commenced the Shidao China route service by STARLINK ONE
- 10 Commenced the T.S.P.S(Trilateral Sea-highway PanStar Service)
- 10 Establishment of PanStar TechSolution Co., Ltd., a ship engineering affiliate
- 12 PanStar Enterprise Co., Ltd. signed an Official Partner (PSA) Agreement with Costa Cruises
- 2017. 01 Entered into the PSA Agreement for Costa Crociere, Italy NeoRomantica Cruise
- 02 Developed an IoT-based smart vessel application system
- 07 Opened a new information system HELIOS
- 09 Introduced “PANSTAR GENIE” vessel
- 11 Commenced the Busan-Nagoya route service by PANSTAR GENIE
- 12 Introduced “PANSTAR GENIE NO.2” vessel
- 2018. 04 Commenced the Busan-Shimonoseki route service by PANSTAR GENIE NO.2
- 04 Obtained a local Shimonoseki customs clearance license in Japan : SanStarLine Co., Ltd.
- 2019. 04 PanStarline.com Co., Ltd. appointed singer ITS as the exclusive model for PanStar Cruise.
- 04 PanStar Enterprise Co., Ltd. launched the charter cruise business
- 08 The 20th Anniversary of SanStarLine Co., Ltd.
- 10 Opened the Hydrogen Eco-friendly Energy Research Center : PanStar Enterprise Co., Ltd.

2015

- 2017. 05 22nd Ocean Day, Stone Tower Order of Industrial Service Merit : Representative Director
- 11 11 PanStar Enterprise Co., Ltd. received the “2017 Best Operation Agency” Award from Costa Cruises.
- 12 Costa Award : PanStar Enterprise Co., Ltd.
- 2018. 03 Commissioner of Customs Commendation : PanStar Co., Ltd.
- 11 Osaka Tourism Bureau Letter of Appreciation : SanStarLine Co., Ltd.
- 12 Cruise of the Year Special Award : SanStarLine Co., Ltd.
- 2019. 05 State Emergency Control Merit Prime Minister Commendation : PanStarline.com Co., Ltd.

2020

- 2020. 06 Registered as an international express carrier and launched International Maritime Express Cargo Service
- 07 30th Anniversary of PanStar Co., Ltd.
- 07 PanStar Enterprise Co., Ltd. joined the Cruise Lines International Association (CLIA)
- 2021. 03 Supplied Lithium Iron Phosphate (LFP) Battery System to Sumitomo, Japan
- 03 PanStar Enterprise Co., Ltd. signed an Official Sales Agent Agreement with Celestyal Cruises
- 2022. 07 Signed the Shipbuilding Contract for PanStar Miracle Cruise
- 08 Completion Ceremony of PanStar Enterprise Gimpo Factory
- 09 PanStarline.com opened a new Pyeongtaek-Japan route
- 2023. 02 Launch of PANSTAR TSUSHIMA LINK Busan-Tsushima (Hitakatsu) route
- 10 Groundbreaking Ceremony of PanStar Miracle Cruise
- 11 Busan-Tsushima high-speed ferry surpassed 100,000 passengers
- 11 Opening of Duty-Free Online Shopping Mall
- 11 PanStar Tech Solution signed MOU with a Sumitomo Group affiliate (Japan)
- 2024. 01 PanStar Enterprise Co., Ltd. awarded a Defense R&D Project
- 01 Establishment of PanStar Investment Co., Ltd.
- 01 Establishment of joint venture PSBX Robotics Co., Ltd.
- 04 One-Night Cruise surpassed 200,000 passengers
- 04 PanStar Enterprise signed Official Partner (PSA) Agreement with MSC Cruises
- 05 Keel-laying Ceremony of PanStar Miracle Cruise
- 07 PanStarline.com launched Regular Container Liner Service
- 09 Load-out of PanStar Miracle Cruise
- 09 PanStar Enterprise signed Agreement with FuriosaAI
- 10 Launching Ceremony of PanStar Miracle Cruise
- 2025. 01 PanStar New Port International Logistics Center obtained AEO Certification
- 04 Naming Ceremony of PanStar Miracle Cruise
- 04 Launch of PanStar Miracle Cruise
- 05 Merger with PanStar Tech Solution and renamed PanStar Enterprise Co., Ltd.
- 07 Completion of PanStar Cruise Plaza Seoul
- 07 35th Anniversary of PanStar Co., Ltd.
- 11 PanStar Enterprise signed Official Partner (PSA) Agreement with Adora Cruises
- 12 Launch of Coastal Cruise Vessel PANSTAR GRACE
- 2026. 02 Establishment of Marine Industry Convergence Technology Research Institute

2020

- 2022. 09 Chairman Kim Hyun-Kyum of PanStar Group received the FIATA Achievement Award (International Federation of Freight Forwarders Associations)
- 2024. 05 PanStar Enterprise Co., Ltd. received the “2024 Top Partner Award” from Costa Cruises
- 09 Chairman Kim Hyun-Kyum of PanStar Group received the 15th Korea Maritime Award
- 2025. 04 Chairman Kim Hyun-Kyum of PanStar Group received the Busan Culture Award (Marine & Fisheries Sector)
- 11 Chairman Kim Hyun-Kyum of PanStar Group received the Busan Tourism Award
- 12 PanStar Enterprise Co., Ltd. received the “Best Overall Sales Partner” Award from Costa Cruises
- 2026. 01 Chairman Kim Hyun-Kyum of PanStar Group received the Proud Sungkyunkwan Alumni Award

PANSTAR EXPRESS CARGO

PanStar Korea-Japan Logistics Originating from Japan's Key Industrial Cities

By operating direct services to Osaka—Japan's key industrial hub with excellent access to the Hanshin and Keihin regions—PanStar has significantly reduced transit time for exporters and importers.

In addition, direct services to Tsuruga, one of the key ports on Japan's western coast, enable daily express delivery across the entire Japanese mainland.

With its own customs clearance license, PanStar has established a same-day clearance and unloading system. Combined with its own ferry operations enabling a 17-hour transit between Korea and Japan, PanStar has developed a HOT DELIVERY SERVICE with a door-to-door lead time of just two days.

- **HOT DELIVERY SERVICE**

By integrating local ferry services with inland transport and Japan's JR freight network, PanStar has built a highly efficient logistics system. This enables fast and reliable delivery across Japan.

- **ALL TYPES OF CARGO**

PanStar's RO/RO vessels provide regular transport services for a wide range of cargo, including FCL types such as DRY, RF, and FR, LCL cargo for cost efficiency, and bulk cargo such as semiconductor equipment, construction machinery, and press machinery that cannot be transported in containers.

- **STATE-OF-THE-ART SAFETY SHIPPING SYSTEM**

By minimizing vessel rolling through stabilizers, PanStar ensures the safety of cargo such as containers and bulk cargo, while maintaining stable operations even in adverse weather conditions, including summer typhoons.

- **ROLL-ON / ROLL-OFF**

As a RO/RO vessel, rapid and stable loading and unloading operations are possible using the bow and stern ramps. PanStar safely transports a wide range of cargo, including vibration-free transport vehicles and high-value semiconductor equipment. By performing cargo handling operations directly within the vessel, exposure of break-bulk cargo to rain and external elements is minimized.



M/V PANSTAR MIRACLE
Gross Ton : 22,129T
L.O.A : 171.20M
Speed : 27.39KN
Cargo Capacity : 254TEU



M/V PANSTAR MIRACLE

PORT	SUN	MON	TUE	WED	THU	FRI	SAT
BUSAN	Departure 16:00		Arrival 10:00 Departure 16:00		Arrival 10:00 Departure 16:00		Arrival 11:00
OSAKA		Arrival 09:00 Departure 17:00		Arrival 09:00 Departure 17:00		Arrival 09:00 Departure 17:00	

M/V PANSTAR GENIE

PORT	SUN	MON	TUE	WED	THU	FRI	SAT
BUSAN				Arrival 17:00	Departure 09:00		Arrival 18:00 Departure 22:00
TOKYO		Arrival 08:00 Departure 20:00					
NAGOYA			Arrival 08:00 Departure 12:00				
WEIHAI						Arrival 19:00 Departure 18:00	

M/V PANSTAR GENIE NO.2

PORT	SUN	MON	TUE	WED	THU	FRI	SAT
MASAN			Arrival 08:30 Departure 14:00			Arrival 09:00 Departure 13:00	
KANAZAWA				Arrival 12:00 Departure 16:00			
TSURUGA					Arrival 07:00 Departure 13:00		
WEIHAI							Arrival 13:00 Departure 18:00
OSAKA		Arrival 10:00 Departure 13:00					



M/V PANSTAR GENIE
Gross Ton : 13,682T
L.O.A : 161.15M
Speed : 18.0KN
Cargo Capacity : 264TEU



M/V PANSTAR GENIE NO.2
Gross Ton : 13,681T
L.O.A : 161.15M
Speed : 18.0KN
Cargo Capacity : 264TEU

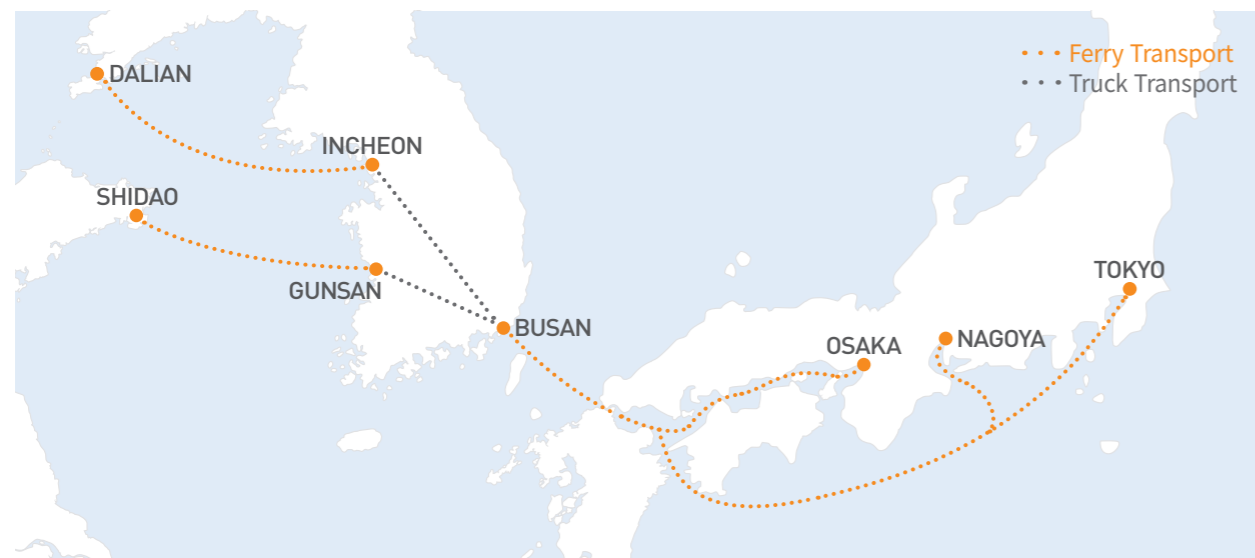
P.K.L.B PanStar Korea Land Bridge

New Logistics Route Connecting "China – Korea – Japan"

PanStar Korea Land Bridge is the service that enables arrivals from China to Japan's Osaka, Tokyo and Tsuruga within 3 days (lead time 40 hours) by connecting the Korea-China car ferries currently operating in the entire regions of China such as Shandong and PanStar ferries operating in the Korea-Japan routes with inland bonded transportations. We established the service route that enables saving of logistics costs for cargo owners by delivering cargoes that were previously transported from China to Japan through the air or air and sea service within the equivalent lead-time.

PORT	SUN	MON	TUE	WED	THU	FRI	SAT
SHIDAO		Departure 18:00		Departure 18:00			Departure 18:00
GUNSAN	Arrival 09:00		Arrival 09:00		Arrival 09:00		
BUSAN	Departure 16:00		Departure 16:00		Departure 16:00		
OSAKA		Arrival 09:00		Arrival 09:00		Arrival 09:00	

PORT	SUN	MON	TUE	WED	THU	FRI	SAT
DALIAN						Departure 17:00	
INCHEON							Arrival 09:30
BUSAN							Departure 22:00
TOKYO		Arrival 08:30					
NAGOYA			Arrival 08:30				



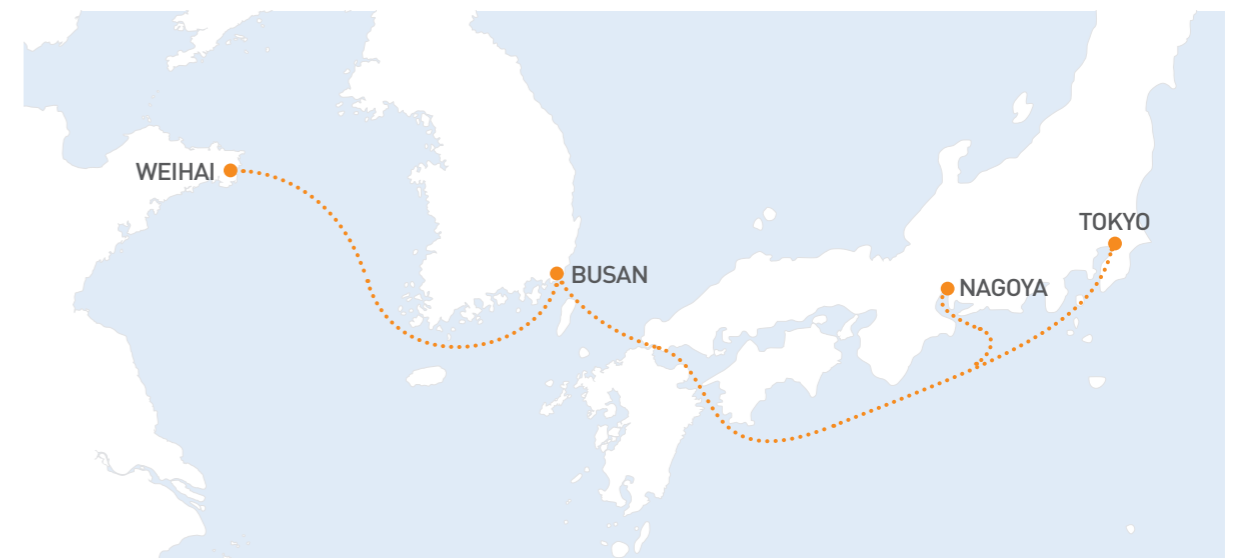
T.S.P.S Trilateral Sea highway PanStar Service

"China – Korea – Japan" Direct Transport Service without T/S

The Trilateral Seahighway PanStar Service is a direct maritime logistics service operated by PanStar ferries, connecting Shidao(China), Busan(Korea), and the Japanese ports of Tokyo and Nagoya. This service enables the fastest cargo delivery across Korea-China and China-Japan routes. It allows products from China to be delivered to major cities in Japan within 3 to 4 days, while Japanese goods can also reach the Shandong Peninsula and across China within the same timeframe. This is PanStar's HOT DELIVERY SERVICE.



PORT	SUN	MON	TUE	WED	THU	FRI	SAT
WEIHAI						Arrival 09:00 Departure 18:00	
BUSAN				Arrival 19:00	Departure 12:00		Arrival 17:00 Departure 22:00
TOKYO		Arrival 08:30 Departure 17:00					
NAGOYA			Arrival 08:30 Departure 14:00				



P.U.E PanStar Ultra Express

Express Freight Service as Fast as Air, Yet More Economical

By linking our ferries operating between Busan and Japan with Japan Railway freight system, which is renowned for its thorough and precise on-time schedule, PanStar established logistics routes that connect the entire regions of Japan. PanStar Ultra Express is a Hot Delivery Service that delivers within 2 days export and import cargoes of major cities in Japan to any inland part for which the port service is not available.

Possession of Railway Transportation License
Only 1.3% of all logistics companies in Japan are in possession of the railway transportation license

On-Time Schedule
The length of Japanese territory is around 3,000 km from its south to north
We are capable of providing one-day cargo delivery service to any place in Japan by using railway transportation network that connect approximately 180 freight terminals throughout Japan

Establishment of Ultra Express Transport Mode
By combining our own ferries and railway transport, we developed the ultra express transport mode (PUE) that can replace air transportation
Which saves transportation costs in an innovative manner compared to aviation logistics

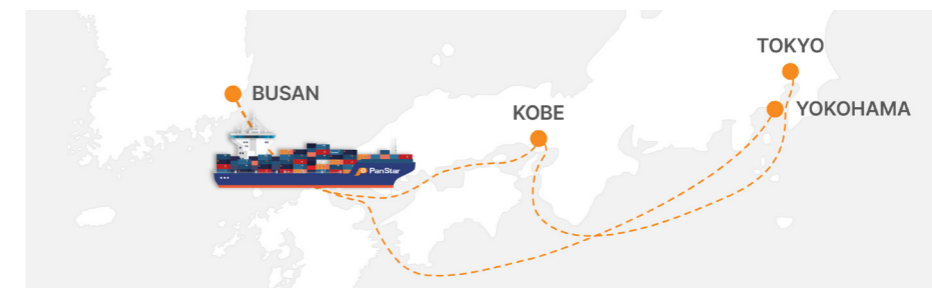


PANSTAR CONTAINER SHIP SERVICE

Container ship service connecting Japan's major metropolitan areas

PanStar Container Ship Service provides service through Kobe, Tokyo, and Yokohama, cities representing the Hanshin and Keihin regions, which are major areas of Japan. We aim to make logistics easier and smoother for exporters and importers by connecting Japan's major metropolitan areas.

KJHK (Korea-Japan Hanshin-Keihin Service)



BUSAN	TOKYO	YOKOHAMA	KOBE
SUN	TUE	WED	FRI

KOREA-CHINA SERVICE

Beyond just linking Korea and Japan, the PanStar container service also unifies Korea, China, and Japan, offering a comprehensive trilateral connection.



BUSAN-NINGBO-SHANGHAI SERVICE

BUSAN	NINGBO	SHANGHAI
WED	FRI	SAT

BUSAN-QINGDAO SERVICE

BUSAN	QINGDAO
SUN	TUE

PANSTAR CRUISE

Korea's First 5-Star Luxury Cruise Ferry – Built with Korean Technology

Introducing the Miracle Cruise, the first luxury cruise ferry built and operated under the Korean flag. It offers a completely new cruise experience, unlike anything previously available in Korea.



PANSTAR MIRACLE

Year Built: 2025	Speed : 27.39KN
Flag : Panama	Capacity : 355passengers
Length : 171.20M	Gross Tonnage : 22,129T
Beam : 25.4M	Cargo Capacity : 254TEU

From an outdoor swimming pool with an ocean-view infinity pool to 5-star hotel-level luxury cabins and unparalleled service, every moment of your journey, from start to finish, will be extraordinary.

Your Fastest Gateway to Tsushima from Busan

The journey takes just 1 hour and 10 minutes. Enjoy a smooth and comfortable journey with minimal motion and seasickness.



PANSTAR TSUSHIMA LINK

Year Built: 2021	Speed : 40KN
Flag : South Korea	Capacity : 425passengers
Length : 52.4M	Gross Tonnage : 684T
Beam : 11.8M	

Embark on a trip to Tsushima, a natural island gem in Japan, where crystal-clear blue waters, lush forests, and tranquil fishing villages come together in perfect harmony.

An Elegant Journey Sailing Across Busan's Landmarks

Aboard Korea's largest sightseeing cruise, enjoy breathtaking views of Busan's coastline and cityscape, and experience a new kind of city tour—right on the sea.



PANSTAR GRACE

Year Built: 2020	Speed : 40KN
Flag : Panama	Capacity : 502passengers
Length : 85.3M	Gross Tonnage : 2,589T
Beam : 20.2M	

A journey through the city as you sail past Busan's landmarks. Experience the beauty of Busan unfolding on the sea.

PANSTAR MIRACLE FACILITIES INTRODUCTION

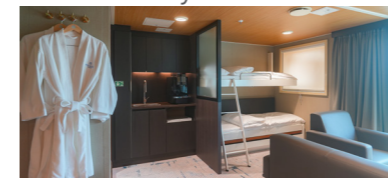
CABINS



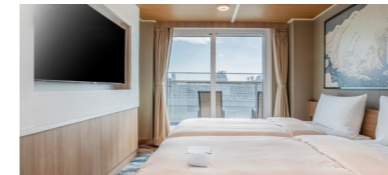
Royal Suite



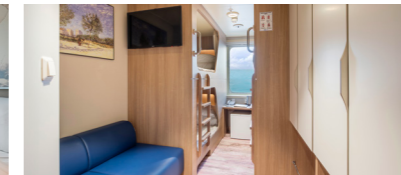
Owner's Room



Presidential Suite



Balcony Suite



Oceanview



Inside

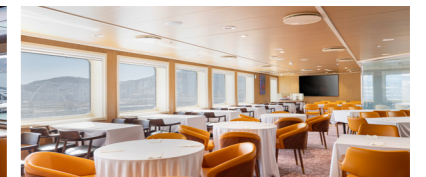
FACILITIES



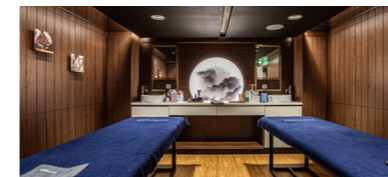
Mugunghwa & Cherry Blossom (VIP Exclusive)



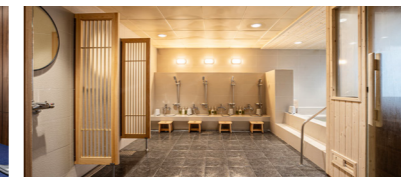
VIP Lounge (VIP Exclusive)



Yume (VIP Exclusive)



[Wellness] Therapy



[Wellness] Sauna



[Wellness] Fitness



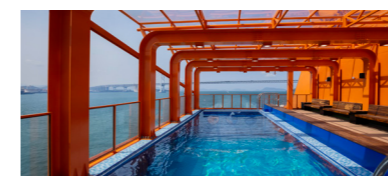
Kids Club



Game Bar



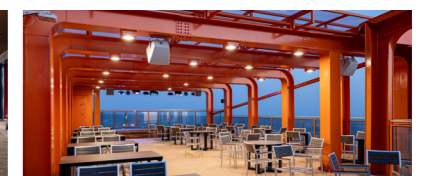
Symposium (Seminar Room)



Hyeonhaetan (Infinity Pool)



DUTY FREE & CVS



Pocha

SETO INLAND SEA CRUISE

Your Journey to Japan Begins the Moment You Board

You can enjoy comfortable and elegant cruise trips with our luxurious cruise cabins and facilities, enjoyable events, and distinguished services. Enjoy breathtaking views of the Seto Inland Sea and exquisite dining, while experiencing a refined cruise journey where travel, accommodation, and relaxation come together as one seamless experience.

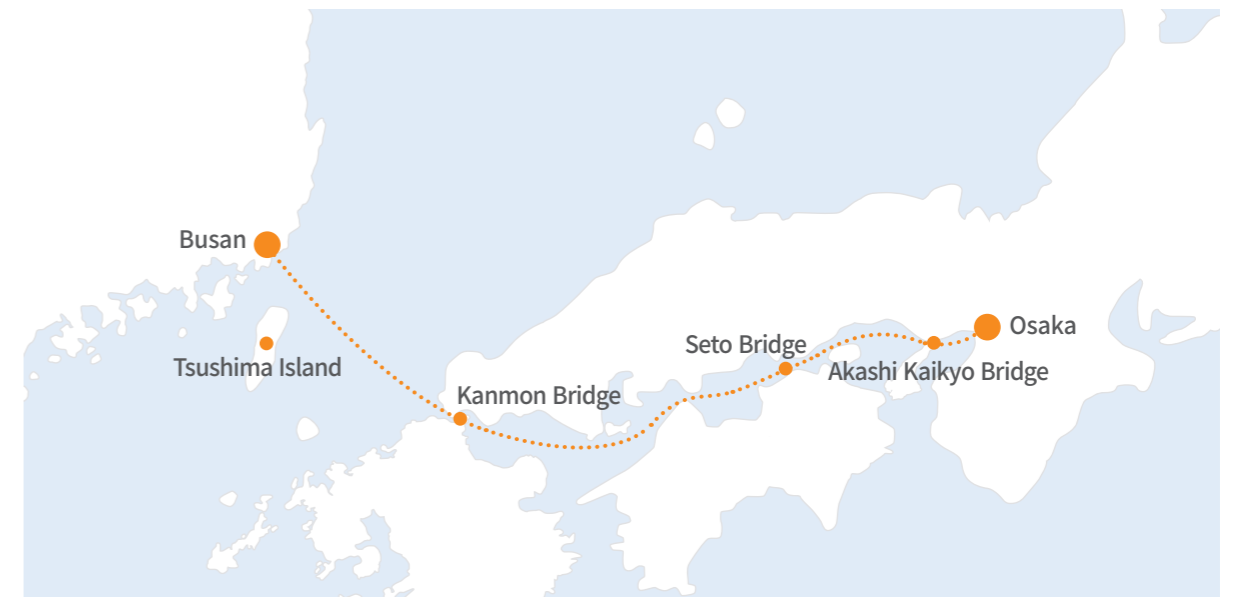
Sailing schedules

* Timetables are subject to change without prior notice due to local conditions or unforeseen circumstances.

Route	Departure	Arrival	Baggage Check-in	Check-in	Last Call
Busan > Osaka	Busan Port Sun, Tue, Thu / 16:00	Next Day 09:00	14:00 ~ 14:30	14:30 ~ 15:00	Until 15:30
Osaka > Busan	Osaka Port Mon, Wed, Fri / 17:00	Next Day 10:00	15:00 ~ 16:20	16:00 ~ 16:20	Until 16:30



Sailing route



	Kanmon Bridge	Seto Bridge	Akashi Kaikyo Bridge
Busan > Osaka	21:30	04:40	07:50
Osaka > Busan	04:30	21:20	18:20

- Relishing the Best Marine Scenery in Japan**
 Experience the breathtaking scenery of Japan's Seto Inland Sea National Park, along with the Seto Ohashi Bridge and the Akashi Kaikyo Bridge—the world's longest suspension bridge.
- Optimal Accessibility Connecting Busan and Osaka**
 Enjoy convenient travel between Busan, Osaka, and the Kansai region, with excellent accessibility thanks to terminals located close to city centers.
- The First and Best Cruise in Korea**
 A variety of performances and onboard events enhance your journey, while differentiated services offer the unique relaxation and romance of cruising—an experience you won't find in air travel.

- Tonight Cruise**
 This is a 2-night, 3-day travel package that includes a round-trip ticket, an onboard buffet meal, dedicated bus transportation, local tour expenses, and priority disembarkation upon arrival at your destination.
- 3-Night, 4-Day Free-Style Cruise**
 Enjoy a customizable 3-night, 4-day cruise! You can choose from a chartered cruise, perfect for corporate events or incentive tours where you plan your own tailored program, or select from various itineraries carefully curated by PanStar, including exciting port-of-call excursions.



BUSAN ONE-NIGHT CRUISE

Island of Fantasy Floating in Busan's Coastal Waters Every Weekend

Experience the stunning coastal scenery of Busan—one of Korea's premier coastal cities—along with spectacular fireworks lighting up the night sky onboard. You can experience comfortable rooms, convenient facilities, performance shows on splendid stages and various participating events. Equipped with dinner and breakfast cruise buffet meals, welcome drinks, and stages and sound equipment for various meetings and events, the cruise is a perfect fit for events such as homecoming days, general assemblies, outings, and picnics.

Sailing schedules

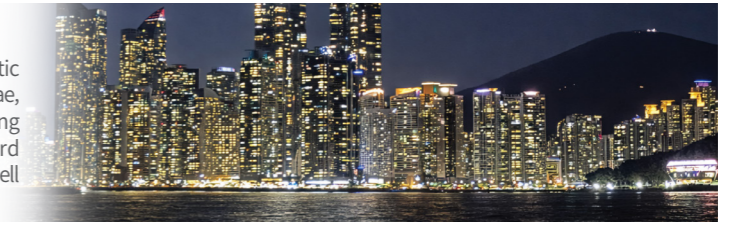
* Timetables are subject to change without prior notice due to local conditions or unforeseen circumstances.

Route	Departure	Ticket Issuance	Departure Clearance	Check-in	Onboard Buffet	Fireworks	Arrival
Busan One-Night Cruise	Standard	Saturday around 17:00	-	15:30 ~ 16:00	18:00 ~ 20:00	20:50	Sunday around 09:00
	Winter	Saturday around 16:30	-	15:00 ~ 15:30	18:00 ~ 20:00	20:50	Sunday around 09:00
Korea Strait Duty-Free Cruise (The third Saturday of every month)	Saturday around 16:00	14:00 ~ 15:00	15:30 ~ 16:00	15:50 ~ 16:10	18:30 ~ 20:30	21:20	Sunday around 09:30



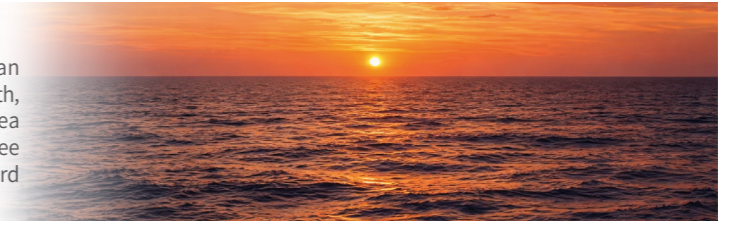
• Busan One-Night Cruise

You can enjoy Busan's coast and fantastic night scenery such as Jo Island, Taejongdae, Oryuk Island and Gwangan Bridge among others as well as hundreds of onboard fireworks embroidering the night sky as well as various events and performances



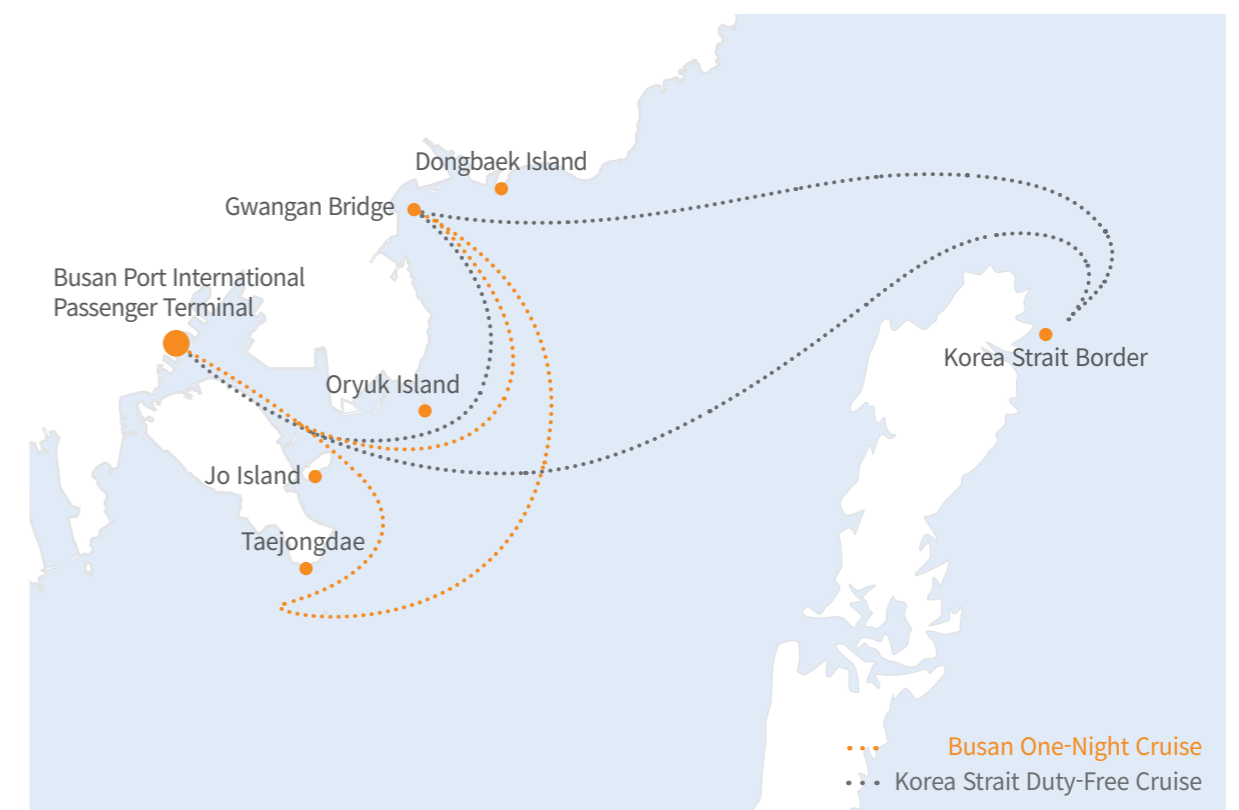
• Korea Strait Duty-Free Cruise

As an international cruise that you can meet every third Saturday of every month, the cruise provides close views of Korea Strait border and you can enjoy duty free shopping and even more diverse onboard events



• Charter Cruise (Schedule TBD)

A charter cruise allows you to reserve an entire cruise vessel for national or local government events, corporate events, weddings, parties, alumni gatherings, and other private occasions.



PANSTAR TSUSHIMA LINK

An Elegant and Unique Way to Enjoy a Day Trip

Experience Tsushima, Japan's closest island to Korea!
 This border island is brimming with pristine nature and an eternal, mysterious allure.
 With the Tsushima Link, designed to minimize rocking and seasickness, you can comfortably explore the diverse charms of Tsushima, whether it's trekking, fishing or cycling.



Sailing route



• Convenient Onboard Services
 Duty-Free Storage Service: Purchase duty-free items onboard when you depart and conveniently pick them up on your return journey



• Premium Seating
 Enjoy a more comfortable trip in our premium seats, featuring wider, more relaxing recliner seats than economy class



• Onboard Currency Exchange
 We offer the first-ever currency exchange service available directly on a high-speed ferry



Infant Care Room
 Located on the 2nd floor of the vessel, this private space is dedicated to nursing and baby care



Travel Gear Storage
 Situated on the 1st floor, this area allows you to store various activity items like bicycles and fishing gear



Duty-Free Shop
 Find a selection of liquor, whisky, cigarettes, cosmetics, general merchandise, and Japanese snacks. You can also pre-order items through our online duty-free shop.

PANSTAR GRACE

An Elegant Voyage at Sea

Enjoy live onboard performances, a dazzling fireworks show, and Busan's breathtaking night views aboard one of Korea's largest cruise ships—all in a special two-hour experience.

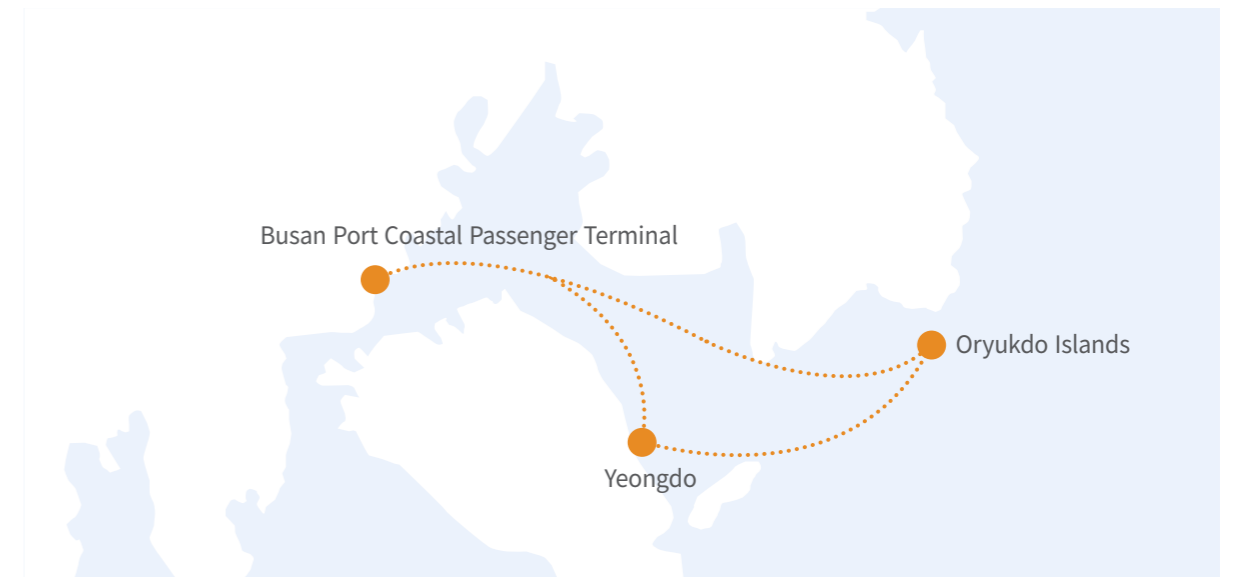
Operating Schedule

*The schedule is subject to change due to local conditions and unforeseen circumstances.

Category		Fri	Sat	Sun
Departure	Arrival			
11:00	13:00			Busan East Coast Cruise (2 hours)
16:30	18:30	Sunset Cruise (2 hours)	Sunset Cruise (2 hours)	Sunset Cruise (2 hours)
19:30	21:30	Fireworks Cruise (2 hours)	Fireworks Cruise (2 hours)	Fireworks Cruise (2 hours)

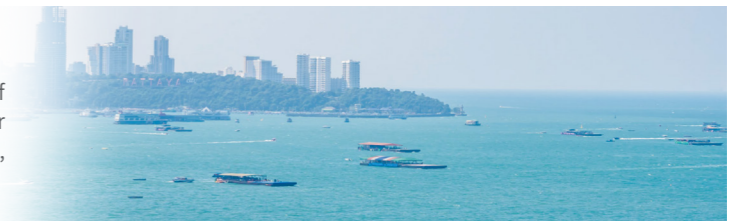


Sailing Route



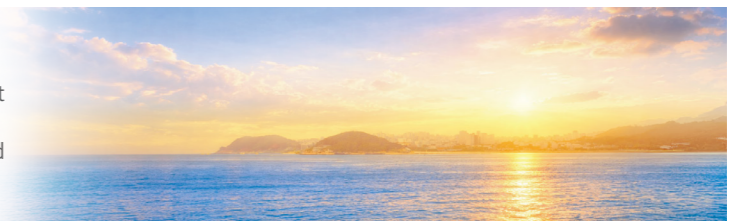
• Busan East Coast Cruise

An exotic cruise offering sweeping views of Yeongdo, where the blue sea and harbor scenery meet, along with Oryukdo Islands, the iconic symbol of Busan's sea.



• Sunset Cruise

A cruise that captures one of the most beautiful moments of the day—as the sun sets beyond the horizon and gently colors the sea.



• Fireworks Cruise

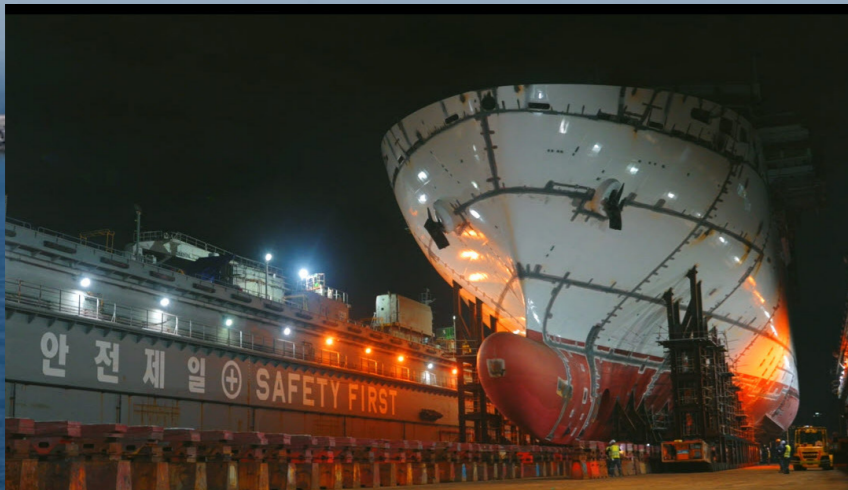
A cruise featuring an impressive onboard fireworks show set to lively music, offering a panoramic view of Busan's iconic landmarks at night.



PANSTARTREE

A Company Specializing in Ship & Crew Management, Ship Operation

PanStarTree is a passenger ship management company that takes an owner-focused approach. We offer tailored management services for ship owners, covering vessel operations, crew management, and safety—along with cost optimization and consulting. We effectively perform ship management services through the ship management system and financial management system that have adopted the company's knowhow on the management of domestic passenger ships and express ferries, and also provides monitoring services which enable the owners to check information on the ship's operations and management conditions online as well as regular management reports. In particular, we provide optimized solutions for passenger ship management and operations, backed by extensive experience in crew training and onboard service.



- Shipbuilding Supervision & Management**
Consults with shipyards to build ships in an energy-saving and environmentally friendly manner while remaining in compliance with various international conventions and classification rules and supervises/manages the shipbuilding processes by suggesting the optimal shipbuilding plans
- Crew Management**
Offers smooth handling service via our systematic crew management service encompassing throughout the entire crew lifecycle, from recruitment onward Controls precise ship operation schedules and creates efficient work environment for crew and optimizes the crew management costs by handling data such as working hours, wages and holidays, etc
- Safety Management**
Continuously maintains and improves the safety management system installed for safe operation of ships and environment protection so that it is constantly in compliance with requirements of ISM CODE and the applicable laws
- Technical Operations Management**
We enhance transparency through competitive bidding for machinery parts and ship chandlers, prevent unnecessary duplicate purchases, and ensure efficient inventory management. We also minimize bunker fuel consumption by analyzing vessel operations and optimize fuel procurement and inventory levels based on market analysis.



PANSTARBNGD

Establishment of Optimal System and Achievement of Best Utility and Economic Feasibility

PanStar Busan Newport Global Distripark, located in the Busan Port New Port Free Trade Zone, secures strong cost competitiveness through tax benefits provided to cargo owners, shippers, and resident companies. BNGD is situated in an optimal location for high value-added operations—such as assembly, disassembly, processing, repair, inspection, and repackaging—as well as transshipment cargo trading. It is equipped with a real-time monitoring and reporting system, supported by dedicated personnel responsible for integrated operations.

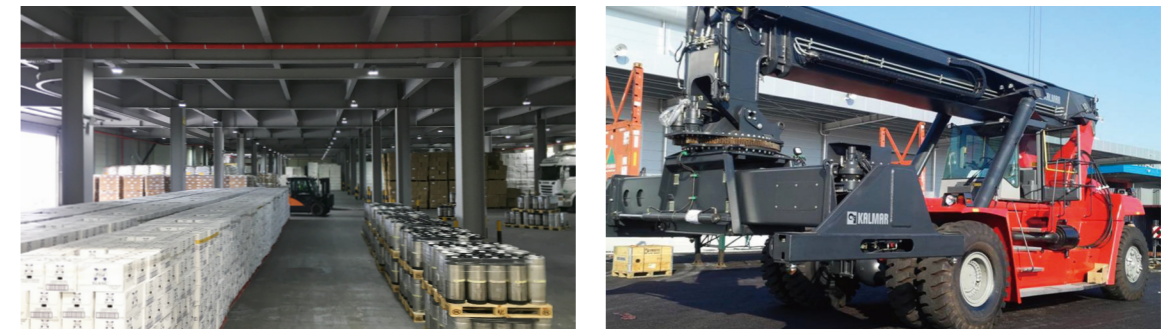
• RO/RO Vessel Connected Service
Achieves prompt loading and unloading and non-stop logistics service through RO/RO vessels by establishing a network with Japan's total logistics company. Saves transportation costs as the logistics center is located close to the new port terminal.

• Reduced Lead Time, Cost Savings
Integrated inland and maritime transport operations reduce lead time, while digitalized management minimizes inventory costs and provides comprehensive logistics consulting.

Additional Services



- Development of High Value-Added Cargo**
Provision of logistics services leveraging the advantages of the new port, including low storage fees and cargo handling costs.
- Establishment of a Trade Hub**
Enhanced global competitiveness through reduced transport distances and lower logistics costs, including assembly, labeling, packaging, and storage.
- Advanced Specialized Cargo Storage Services**
Installation and operation of hazardous materials storage facilities (indoor: 990m², outdoor: 300m²) and temperature- and humidity-controlled rooms (435m²).



Total Area 40,106m² | 1st Floor 16,525m² | 2nd Floor 4,958m² | Storage Capacity Warehouse Cargo 23,000R/T Container Yard 3,150TEU

PANSTAR ENTERPRISE

Shipbuilding & Marine Division

A global engineering company and total service provider, delivering end-to-end solutions from new ship design to eco-friendly vessel retrofits

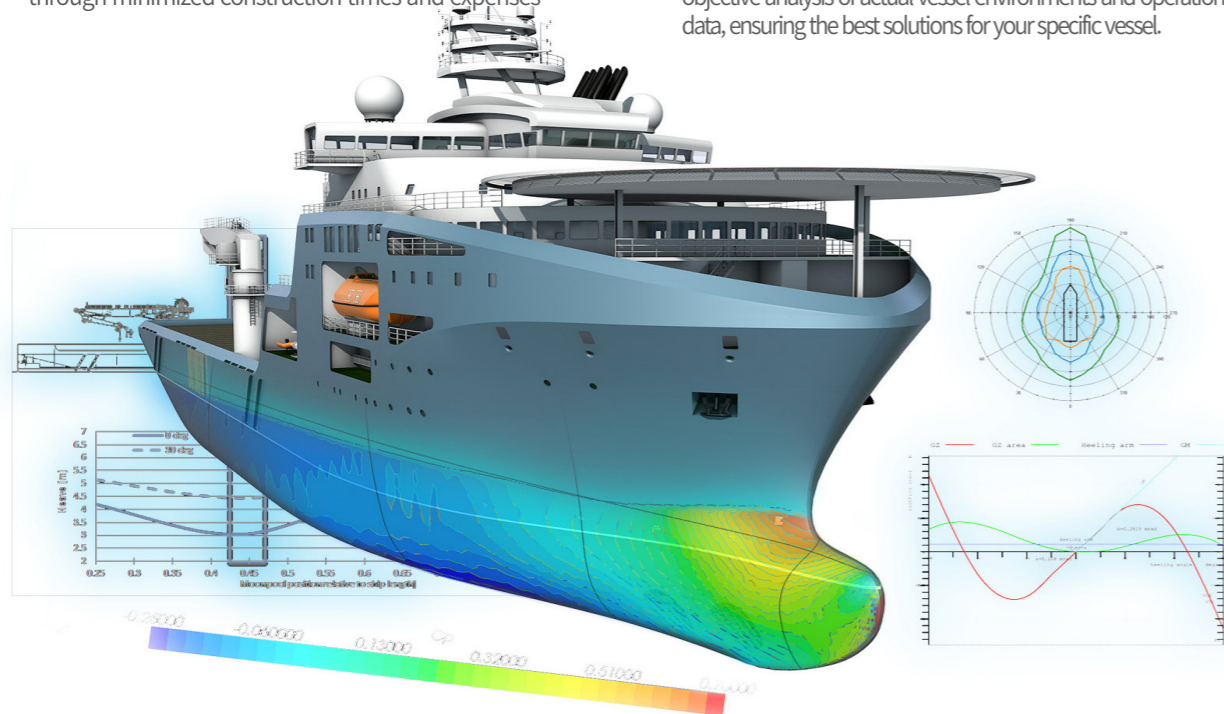
The Shipbuilding & Marine Engineering Division of PanStar Enterprise is a global engineering company providing comprehensive ship design services—from hull form design to production engineering.

In response to increasingly stringent environmental regulations, we offer a wide range of retrofit engineering solutions, including Exhaust Gas Cleaning Systems (EGCS), Ballast Water Management Systems (BWMS), and Air Lubrication Systems (ALS).

Backed by specialized engineers and experienced technical sales teams, we support shipowners and shipyards both domestically and internationally, based on extensive installation experience.

Furthermore, we are actively responding to the evolving demands of the global shipping industry by expanding our business into Energy Saving Devices (ESD) and Carbon Capture Systems (CCS), contributing to energy efficiency and greenhouse gas reduction.

- 
Competitive Pricing
 We provide reasonable quotations because we manage every project entirely in-house. This includes everything from 3D scanning, basic and detailed design, and drawing approvals, to material procurement and construction supervision
- 
Comprehensive New Ship Design
 We offer all-inclusive design services for new vessels. This covers everything from sales design and hull lines design, all the way through to basic and detailed design, and even production design based on 3D modeling.
- 
Extensive Ship Retrofit Experience
 With a rich track record of over 200 BWMS installations and around 50 EGCS installations, our vast experience in ship modifications helps clients significantly reduce costs through minimized construction times and expenses
- 
EEXI & CII Consulting Services
 To help you meet IMO's existing ship energy efficiency regulations (EEXI) and carbon intensity regulations (CII), we offer optimized consulting services. These are based on an objective analysis of actual vessel environments and operational data, ensuring the best solutions for your specific vessel.



As your reliable engineering partner, we continuously earn client trust through our extensive experience and proven technical expertise!

Engineering Capability		
Basic Design	- General Arrangement	- T/S & Damage Stability, Etc
Hull Design	- Key Plan	- Hull Construction, Etc
Hull Piping	- Piping Diagram, Etc	- Valve & Fitting list for Hull part
Hull Outfitting	- Anchor & Mooring Arr't	- Hull Outfitting Arr't, Etc
Machinery	- Machinery Arr't of E/R & P/R	- P&ID, Etc
Elec. Design	- Power analysis Calculation	- Electrical Design, Etc
Accom. Design	- Piping & HVAC	- Joinery Part
Prod. Design	- Hull, Piping, Outfitting & Electric, ETC	



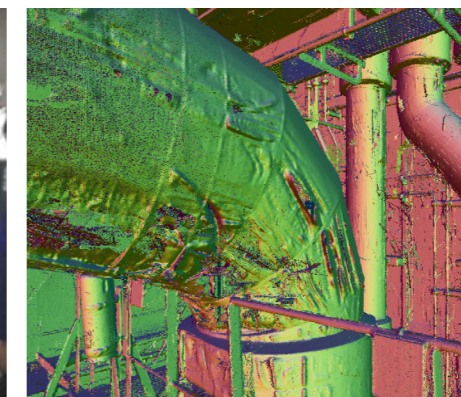
Skilled Engineers with extensive experience



Proven Engineering capability via lots of Retrofit Projects



From **Contract Design** To **Production Design**



PANSTAR ENTERPRISE

Heshbon Business Department

Leading the Vehicle Maintenance Equipment Market, Global Maintenance Brand HESHBON





PanStar Enterprise developed Korea's first X-TYPE lift and became the first in the industry to pass safety inspections conducted by a nationally accredited testing institution, earning the Q-Mark certification.

Its comprehensive automotive maintenance equipment brand, HESHBON, leads the market by developing a wide range of high-tech equipment based on proven technology, including various lifts, tire wheel balancers, tire changers, and wheel alignment systems.

The company established its in-house research institute in 2001 to focus on new product development and was listed on the KOSDAQ in 2002.

With a strong presence in advanced markets such as the United States, Europe, and Japan, and a global sales network spanning over 50 countries, PanStar Enterprise continues to expand its footprint worldwide. HESHBON products have also obtained the European CE certification, demonstrating their quality and safety.

In addition, leveraging its accumulated lift technology, the company participates in the design and manufacturing of industrial lifts and continues to expand its business into mobility-linked lift equipment.

- 
Operation of Corporate R&D Center
 Recognized as a corporate R&D center by the Korea Industrial Technology Association—the first in Korea's vehicle maintenance industry
- 
Maintains a nationwide after-sales service network.
 Nationwide after-sales service network across Korea with a two-year free warranty
- 
Nationwide After Sales Service Network
 17 patents filed and registered
 5 design rights filed and registered
- 
Nationwide Network of Agencies and Service Centers
 Nationwide Agencies and Service Centers Operates 12 agencies and 25 service centers nationwide



The first domestically developed X-TYPE lift

Charter Cruise Business Division

Providing total global cruise solutions beyond Korea departure and arrival services.

PanStar Enterprise operates a comprehensive cruise business encompassing a full spectrum of global cruise products, built on its heritage of operating traditional international cruises departing from and arriving in Korea. In addition to cruises that embark directly from Korea, the company offers a diverse portfolio including Fly & Cruise packages connecting major global routes, as well as Ticket Only reservation services that provide cruise boarding passes independently. Customers can flexibly choose from tailored itineraries that combine flights and cruises to suit their travel purpose and schedule, or opt for pure cruise experiences.

GLOBAL OFFICIAL PARTNERSHIPS

Costa Cruises, MSC Cruises, Adora Cruises, Celestyal Cruises

Through direct partnerships with global cruise lines, the company has established a stable cabin supply and strong competitiveness in inventory procurement, while enabling the development of differentiated cruise products. As a member of the Cruise Lines International Association (CLIA), PanStar Enterprise also possesses the expertise and global network aligned with international standards.

CORE COMPETENCIES

- 
Specialized Expertise in Korea-Based Cruises
 Operated by Korea's only cruise line, with a dedicated organization and a team of experts with backgrounds as international cruise crew.
- 
Charter Cruise Operational Expertise
 Extensive experience in customized planning and reliable operations for corporations, institutions, and travel agencies.
- 
Global Direct Partnership Network
 Stable cabin supply and strong product competitiveness secured through direct contracts with cruise lines.
- 
Ticket-Only Reservation Service
 Meeting independent travel demand through the standalone sale of cruise tickets.
- 
Fly & Cruise Packages
 Global Fly & Cruise package planning and sales.
- 
Member of an International Industry Association
 Enhancing international credibility and industry leadership through membership in CLIA (Cruise Lines International Association).



PANSTAR ENTERPRISE

Future Business Division

Planning, developing, converging, and fostering advanced technologies for global distribution

PanStar Enterprise strategically develops globally competitive advanced technology businesses. Leveraging the Group's core capabilities, we have built an integrated value chain—from technology planning and business development to production, marketing, and logistics—driving our growth as a specialized advanced technology trading company.

• Energy Storage System

Conducts business supplying lithium iron phosphate (LiFePO4) batteries and control systems(BMS) to companies conducting communication, energy and infrastructure services at the global market by promoting an industrial energy storage system from the technical planning stage
Develops and globally distributes FESS(Factory Energy Storage System), RESS(Renewable Farm), TESS (Telecommunication), HESS(Home) and the related solutions based thereon such as Virtual Power Plant(VPP) and Automated Guided Vehicles(AGV), etc



Authentication & Encryption Technologies and Network/Platform Development

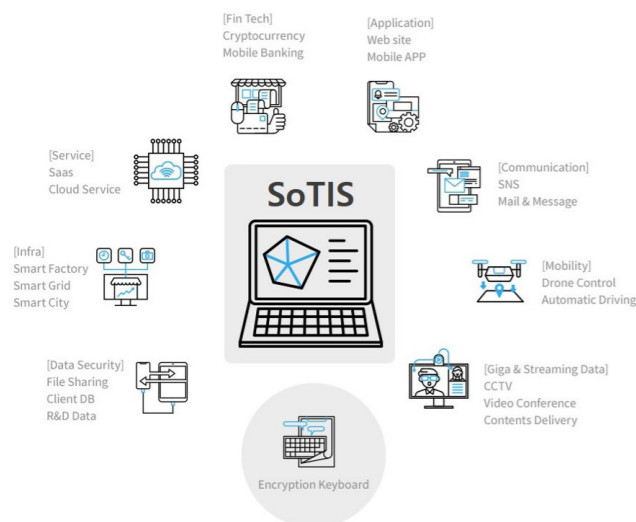
Based on proprietary patented authentication and encryption technologies, we design next-generation networks and develop AI-driven application technologies, which are deployed globally across a wide range of products and services.

• Device Authentication and Data Security Technology: 'SoTIS'

An authentication solution for various IT communication devices, as well as ultralight devices like sensors and IoT devices
Enables seamless real-time encrypted transmission and storage of transaction information, user data, files, and even large video data through simultaneous encryption at the data generation stage

• AI Infrastructure Development Business

Developing and deploying components related to advanced data center construction for AI technology utilization in industrial control and security, mobility, and defense sectors



International Express Business Division

Faster Korea-China-Japan International Express Cargo Service Powered by a Same-Day Customs Clearance Logistics System

E-commerce among Korea, China, and Japan is expanding even faster through PIEX (PanStar International Express), PanStar's new international sea express service centered on its express cargo ferries. PanStar's PIEX is a new international logistics service that maximizes efficiency by directly managing the entire process—from local logistics and packing to customs clearance, bonded transportation, and marine transport.

• PanStar Express Cargo Ferries

Achieves daily express delivery service throughout the mainland of Japan by offering a non-stop shipping service to major Japanese ports such as Osaka, Tokyo, Nagoya, Shimonoseki and Tsuruga

• SanStarLine

Obtained the customs clearance licenses in Osaka and Tokyo for the first time as a local subsidiary in Japan
Offers the one-stop service through international transportation service and export and import customs clearance service

• Yongdang Express Cargo Clearance Division in Busan

Processes rapidly increasing E-Commerce express cargoes departing from Japan and China through the International Express Cargo Clearance Division of Yongdang Customs which has been established at Busan Port in 2020 in order to disperse and bring in such express cargoes to Busan Port that were previously concentrated on Incheon Port and Pyeongtaek Port
PanStar is registered as No.1 express transport company at International Express Cargo Clearance Division of Yongdang Customs in Busan and offers optimized services



PANSTAR I&C

PanStar Infra Construction: Innovative and Expert General Construction Services

PanStar Infra Construction is a comprehensive construction company that leverages innovative technology and specialized expertise to provide diverse construction services. We handle the maintenance and management of PanStar Group's own structures, including buildings and specialized facilities like ships. As a proud partner of POSCO Steeleon, we specialize in the interior and exterior construction of buildings using their premium PosART products. We are continually expanding our business scope as a general construction firm capable of building new structures, renovating existing ones, and remodeling public facilities in both Korea and Japan.



Building New Construction & Renovation

• Building New Construction & Renovation
 We possess comprehensive capabilities across all aspects of architecture, from architectural planning and interior design to 3D imaging, structural calculations, and drawings. We manage the entire building construction process, from initial quotation proposals to design and construction

• Ship Interior Construction
 With over 20 years of experience in ship interior construction, we specialize in fitting out cabins, lobbies, performance venues, and various amenity spaces

• Building Maintenance & Management
 We inspect structural safety and evacuation-related aspects to ensure buildings remain safe, enhance convenience, and propose rational equipment operation and efficient usage plans to reduce maintenance costs.

• PosART Specialist Construction
 As a certified specialist contractor for POSCO Steeleon's PosART, we have a proven track record across various sectors, including public facilities, ships, and other buildings. We offer a simple and innovative approach to installing eco-friendly, permanent interior and exterior finishes.



Ship interior construction



PosART Specialist Construction



Building Maintenance & Management

PS ROBOTICS

In collaboration with SoftBank Robotics, we've established a joint venture to transform traditional analog FM services into digitalized FM businesses utilizing a hybrid system where robots and humans collaborate. An ideal hybrid system in which people and robots work together seamlessly.

SBX (Smart Building DX) Solution Business

- Provides services that link robots, sensors, analyzers, and facilities through our independently developed SmartBX platform. An ideal hybrid system in which people and robots work together seamlessly.
- Establishes robotics operation solutions specifically for hospitals and medical institutions
- Secures a diverse lineup of robotic vacuum cleaners, enabling optimal proposals tailored to each site

SBX (Smart Building DX) Facility Management Business

- Building a nationwide network starting with Seoul and Busan, growing into a top-tier Smart FM company
- Expanding service areas from large complex buildings, hospitals, knowledge industry centers, hotels, and public facilities to include large apartment complexes and office buildings, based on our existing track record
- Establishing a comprehensive service that cares for both the interior and exterior of buildings



PANSTARINVESTMENT

PanStarInvestment: Your Strategic Investment Partner

PanStarInvestment is PanStar Group's dedicated investment arm, driving the group's future growth by discovering and strategically nurturing new business ventures.

We are continuously expanding our business scope by increasing investments in promising new projects, leveraging the synergy and connection with our existing businesses such as shipping and port logistics.



SANSTARLINE

SanStarLine is a comprehensive logistics company based in Japan, providing cargo transportation through its HOT DELIVERY SERVICE across Japan, China, and Korea, as well as import/export customs clearance services, passenger and travel services connecting Korea and Japan, and trading business functions.

Founded in 1999 and headquartered in Osaka, the company operates a wide range of businesses through its key bases, including the Tokyo branch, Nagoya sales office, Hokuriku office, Tsushima office, and Osaka logistics center.

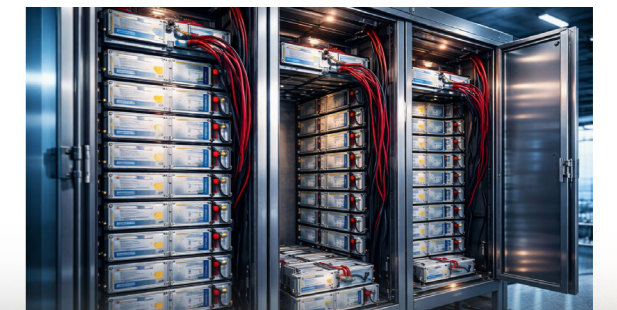
Cargo division

In the Cargo Division, we operate as a comprehensive international logistics provider in Japan, offering a wide range of services including international maritime scheduled transportation, shipping agency services, freight forwarding, customs clearance, warehousing, JR rail transport, and trucking. Furthermore, as the first Japan-based subsidiary of a Korean company to obtain customs clearance licenses in both Osaka and Tokyo, we have established a HOT DELIVERY SERVICE that enables seamless, end-to-end handling—from same-day customs clearance upon arrival in Japan to warehousing and inland transportation.



Future Business Division

In the Future Business Division, we provide products and solutions related to energy, automotive, and AI with the goal of contributing to the realization of a next-generation society. Our offerings include high-capacity, high-safety lithium iron phosphate (LFP) batteries, automotive maintenance lifts (HESHBON brand), and AI-related semiconductors, which are being expanded into the global market. Going forward, SanStarLine will continue to contribute to the development of the international community and the expansion of Korea-Japan exchange through its logistics, passenger services, and new business sectors.






SANSTARLINE

Passenger Division

In the Passenger Division, we contribute to the promotion of tourism and exchange between Korea and Japan through international ferry services, charter bus operations, and travel product development. We operate a cruise ferry service connecting Osaka and Busan three times a week, and in Osaka, we provide premium charter bus services utilizing a fleet of approximately 20 high-end vehicles. In addition, we operate daily high-speed ferry services between Tsushima and Busan. As part of regional tourism development in Tsushima, we are also engaged in local bus operations and hotel business on the island. Our goal is to deliver “Omotenashi” (Japanese-style hospitality) tourism services to customers from both Korea and Japan.

Business Division

- 
• Hotel Business
- 
• Bus-shuttle services
- 
• Cruise Business



List of Obtained Permits

- 1999.12.14 First-Class Transportation Business
- 2006.11.08 Osaka Customs Clearance Business
- 2007.03.15 First-Class Travel Business
- 2008.06.27 Second-Class Cargo Transportation Business
- 2008.12.09 Tokyo Customs Clearance Business
- 2015.03.30 First-Class Cargo Transportation Business
- 2015.12.18 International Class II Freight Forwarding Business License
- 2016.07.29 General Chartered Passenger Vehicle Transportation Business
- 2018.04.17 Shimonoseki Customs Clearance Business
- 2021.01.29 Type 1 Cargo Vehicle Transport Business
- 2025.06.16 Licensed for Hotel/Ryokan Business (Nagasaki Prefecture)
- 2026.03.03 Licensed for General Charter Passenger Transportation Business (Nagasaki Prefecture)



Miracle Cruise



PANSTAR NETWORK

PanStar CO., Ltd.

International Ocean Freight Transport, International freight forwarding, Shipping agency

PanStar Cruise Plaza Seoul, 18 Sejong-daero 16-gil, Jung-gu, Seoul, Republic of Korea
TEL.+82 - 2 - 779 - 4011 FAX.+82 - 2 - 775 - 7533

PanStarline.com CO., Ltd.

International Ocean Freight Transport, International Ocean Passenger Transport
International cargo forwarding

[Cargo Division]
6F, PanStar Cruise Plaza Seoul
18 Sejong-daero 16-gil, Jung-gu, Seoul, Republic of Korea
TEL.+82 - 2 - 756 - 4500 FAX.+82 - 2 - 772 - 7522

[Passenger Division]
3F, Busan Port International Passenger Terminal
206 Chungjang-daero, Dong-gu, Busan, Republic of Korea
TEL.+82 - 1577 - 9996 FAX.+82 - 51 - 469 - 6179

PanStarTree CO., Ltd.

Ship Management, Construction

2F, PanStar Cruise Plaza, 30 Haegwan-ro, Jung-gu, Busan, Republic of Korea
TEL.+82 - 51 - 469 - 8801 FAX.+82 - 51 - 469 - 8215

PANSTARBNGD CO., Ltd.

General & Bonded Warehousing, International cargo forwarding, Weight verification

56, Sinhang 7-ro, Jinhae-gu, Changwon-si, Gyeongsangnam-do, Republic of Korea
TEL.+82 - 55 - 981 - 3240 FAX.+82 - 55 - 551 - 1771

PanStar Enterprise CO., Ltd.

Automotive Maintenance Equipment, Integrated Logistics & Cruise, Eco-Friendly Ship Engineering, Future Business

[Shipbuilding & Marine Division]
4F, PanStar Cruise Plaza, 30 Haegwan-ro, Jung-gu, Busan, Republic of Korea
TEL.+82 - 51 - 240 - 8234 FAX.+82 - 51 - 240 - 8246

[HESBON Division]
45 Ongjeong-ro, Tongjin-eup, Gimpo-si, Gyeonggi-do, Republic of Korea
TEL.+82 - 1577 - 3520 FAX.+82 - 303 - 3130 - 3535

[Charter Cruise Division]
PanStar Cruise Plaza Seoul
18 Sejong-daero 16-gil, Jung-gu, Seoul, Republic of Korea
TEL.+82 - 1577 - 9008 FAX.+82 - 2 - 772 - 7502

[Future Business Division]
PanStar Cruise Plaza Seoul
18 Sejong-daero 16-gil, Jung-gu, Seoul, Republic of Korea
TEL.+82 - 2 - 6420 - 2266

PanStar I&C Co., Ltd.

Building Construction and Renovation
Ship Interior Construction Specialized POSART Installation
PanStar Cruise Plaza Seoul, 18 Sejong-daero 16-gil, Jung-gu, Seoul, Republic of Korea
TEL.+82 - 2 - 318 - 6811 FAX.+82 - 51 - 977 - 3086

PS Robotics Co., Ltd.

Physical AI-based Intelligent Solutions Business
AX, Smart FM-based Facility Management, Security & Outsourced Operations Services

12F, Yeollin M Tower 2, 242 Gonghang-daero, Gangseo-gu, Seoul, Republic of Korea
TEL.+82 - 2 - 400 - 7414

SanStarLine CO., Ltd.

Ocean Freight Transportation · International Freight Forwarding
Shipping Agency · Customs Clearance · Travel Services · Bus Operations
Machinery & Equipment Trading

[Osaka Head Office]
7F, Osaka Kokusai Building, 2-3-13 Azuchimachi, Chuo-ku, Osaka, Osaka, Japan
Cargo TEL.+81 - 6 - 6267 - 9778 FAX.+81 - 6 - 6267 - 9766
Logistics TEL.+81 - 6 - 6271 - 6850 FAX.+81 - 6 - 6271 - 8832
Customs Clearance TEL.+81 - 6 - 6271 - 3233 FAX.+81 - 6 - 6271 - 8832

[Osaka International Ferry Terminal]
2F, International Ferry Terminal, 1-20-52 Nankokita, Suminoe-ku, Osaka, Osaka, Japan
Passenger TEL. +81 - 6 - 6614 - 2516 FAX. +81 - 6 - 6614 - 2518
Marine TEL.+81 - 6 - 6569 - 2520 FAX. +81 - 6 - 6614 - 7039

[Osaka Bus Operations Office]
1-19-7 Nankokita, Suminoe-ku, Osaka-shi, Osaka, Japan
TEL.+81 - 6 - 6614 - 2581 FAX.+81 - 6 - 6614 - 2700

[Osaka Nanko Bonded Warehouse]
7-2-92 Nankohigashi, Suminoe-ku, Osaka, Osaka, Japan
International Express TEL.+81 - 6 - 6569 - 2230 FAX.+81 - 6 - 6569 - 2238
SPS (Express) TEL.+81 - 6 - 6654 - 3989 FAX.+81 - 6 - 7732 - 8079

[Tokyo Branch]
7F, Daiichi Ginza Building, 7-12-18 Ginza, Chuo-ku, Tokyo, Japan
Cargo TEL.+81 - 3 - 3544 - 5123 FAX.+81 - 3 - 3544 - 5126
Customs Clearance
TEL.+81 - 3 - 3544 - 5127 FAX.+81 - 3 - 3544 - 5126

[Hokuriku Office]
3F, Kanazawa Port Cruise Terminal, Ri-65 Muryojimachi, Kanazawa, Ishikawa, Japan
TEL.+81 - 76 - 254 - 6884 FAX.+81 - 76 - 254 - 6885

[Nagoya Office]
6F, Usami Marunouchi Building, 3-21-23 Marunouchi, Naka-ku, Nagoya-shi, Aichi, Japan
TEL.+81 - 52 - 950 - 6630 FAX.+81 - 52 - 950 - 6631

[Tsushima Office]
2F, 958-11 Hitakatsu, Kamitsushima-cho, Tsushima-shi, Nagasaki, Japan
TEL & FAX.+81 - 920 - 88 - 6060

Izuhara International Terminal
Shin-Izuhara Port International Terminal, 341-24 Higashizato, Izuharamachi, Tsushima, Nagasaki, Japan
Hotel Kamiso
390 Nishidomari, Kamitsushimamachi, Tsushima, Nagasaki, Japan
TEL.+81 - 920 - 86 - 3120

Tsushima Bus Office
2F, Tsushima Airport, 440 Kechi, Mitsushimamachi, Tsushima, Nagasaki, Japan
TEL.+81 - 920 - 54 - 2211 TEL.+81 - 920 - 54 - 2228

SP Trading CO., Ltd.

Trading, Distribution services, Container leasing services

[Tsushima Head Office]
390 Nishidomari, Kamitsushima-machi, Tsushima, Nagasaki, Japan Kamiso

[Osaka Sales Office]
2F, International Ferry Terminal
1-20-52 Nanko-kita, Suminoe-ku, Osaka, Japan

TEL.+81 - 6 - 6569 - 2520 FAX.+81 - 6 - 6614 - 7039